

Hydrologically Connected Area for Fully Appropriated Basins within the State of Nebraska

Background

As part of the fully appropriated basin determination process pursuant to Nebraska Revised State Statute 46-713(3), the Department of Natural Resources has used the following methodology to determine the area where ground water and surface water are hydrologically connected. By rule¹, the geographic area in which groundwater and surface water is hydrologically connected for management purposes is defined as the area within which pumping of a well for 50 years will deplete the river or a base flow tributary thereof by at least 10% of the amount pumped in that time¹ (10/50 area).

Comment [GVS1]: Is this the actual quote??

Methodology

All modeling efforts and methodologies have limitations which the user must take into consideration when determining the method to be used and whether results and analysis are appropriate for the task. Historically three broad categories of models have been used to study ground water flow systems, sand tank models, analog models and mathematical models, including analytical methods and numerical models. The first two methods were primarily used prior to the advent of the modern high speed digital computers. Since the advent of high-speed computers numerical models have been the favored type of model for studying ground water. One widely used numerical model that was developed by the USGS is MODFLOW². A previous study compared the results of several analytical methods to a two-dimensional ground water flow model and showed that simplifying assumptions needed for use of the analytical methods resulted in differences in stream flow depletion from the numerical model that ranged from 20 percent, due to neglect of partial penetration, to 45 percent, due to neglect of clogging layer resistance, after 58 days of pumping Spalding and Khaleel [1991]³.

Comment [GVS2]: hydrologic modeling--you are referring to hydrologic modeling aren't you, regardless of other types of modeling. Sentence is awkward--consider rewriting to something like: Limitations of hydrologic modeling and methodologies must be considered by the user when determining the results and analyses, and the appropriateness of the given task.

For those areas of the state where an existing MODFLOW model suitable for regional analysis is available, it is used to develop the 10/50 areas. However, much of the state is not covered by suitable numerical model(s). In order to properly use a numerical model the appropriate detail of data must be supplied as inputs to the numerical model. Due to lack of detailed data and the time constraints for this report a suitable numerical model could not be developed for areas where a model does not already exist. In these other areas an analytical method is used.

Comment [SMP3]: Might be able to delete that part: analog models, analytical models, and numerical models.

Comment [SMP4]: Try: computers after which numerical models have been favored for studying ground water.

This study uses the analytical method described by Jenkins in 1968, which is commonly known as the Stream Depletion Factor (SDF)⁴. This method lends itself to the basin wide

Comment [GVS5]: 2D can be horizontal or vertical. You might want to say something like a regional two-dim model (or something like that). Was the 2D model a MODFLOW model?

Comment [SMP6]: This is a really long sentence, breaking it into a few parts might enhance clarity.

Comment [GVS7]: What is a model suitable for regional analysis (how large do regional models have to be before the person determining the suitability decides if it is suitable or not), but more importantly who is making the call on whether it is suitable or not (NDNR??)?

Comment [SMP8]: This is a really long sentence, breaking it into a few parts might enhance clarity.

¹ <http://www.dnr.state.ne.us/LB962/Notice/FullyAppropriatedRuleFINAL.pdf>
² MODFLOW USGS 1984?
³ Spalding, C.P. and R. Khaleel. 1991. An evaluation of analytical solutions to estimate drawdowns and stream depletions by wells. *Water Resour. Res.* 27(4). 597-609.
⁴ Jenkins, C.T. 1968. Techniques for computing rate and volume of stream depletion by wells. *Ground Water*, 6(2), 37-46.

Comment [GVS9]: A substantial amount of quality-assured data??

Comment [SMP10]: Delete other.

aspect of the task described by this report. A list of the assumptions for the Jenkins method is contained in the USGS publication. The tools Jenkins described was built upon equations previously published by several authors including Glover and Balmer (1954)⁵, Maasland and Bittinger (1963)⁶, Gautuschi (1964)⁷ and others. Jenkins specifically developed his tools for ease of use for water administrators. This was one major reason for selecting this tool for this analysis as well as the fact that the detail of data necessary on a regional basis is available and this tool is currently used by other agencies for administrative purposes, including Colorado and Wyoming.

Comment [SMP11]: method
Comment [SMP12]: based
Comment [SMP13]: delete this phrase

Comment [SMP14]: Rewrite for clarity
Comment [SMP15]: Replace agencies with "states"?

Modifications to the Jenkins SDF method were also considered because the assumptions in the original Jenkins method do not always fit real world situations. Jenkins SDF can be modified to address situations such as boundary conditions⁸ and streambed conductance⁹. These modifications require data on these parameters to perform the analysis. No modifications were made to Jenkins for this analysis because of the lack of published data necessary for the calculations. Generally these additional calculations are required only when near the stream or boundary condition. As you move away from the stream the percent impact of the parameters becomes a small fraction of the overall total analysis.

Comment [SMP16]: Try "Modified versions of the Jenkins method were also considered"

Comment [SMP17]: Try "these modified versions can address"

Comment [GVS18]: partially penetrating wells—I think this is a big problem with Jenkins method.

Comment [SMP19]: Replace with "for the modified versions"

10/50 Area Calculations

In areas covered by numerical models the steps were taken to define the 10/50 boundary areas are documented in the appropriate model documentation in the appendix. The areas being modeled numerically are the Upper portion of the Big Blue and Little Blue rivers, the eastern portion of the Tribasin NRD associated with the Platte River and the Portion of the Loup River associated with Platte River depletions.

Comment [SMP20]: So everyone remembers what parameters mean, might replace with "boundary conditions, partially penetrating wells, and streambed conductance"

Comment [GVS21]: Why?? Is it because as r (a in Jenkins equation) gets larger r^2 becomes the dominating factor? You might want to put a small explanation in here

Comment [SMP22]: delete, it doesn't fit in this sentence

Comment [SMP23]: "Respective"

Comment [SMP24]: A figure might help to illustrate exactly where you are talking about

In areas covered by the Jenkins method the following steps were taken to define the 10/50 boundary areas.

1. Data preparation.
 - a. Transmissivity maps
 - b. Specific yield maps
 - c. Perennial Stream reaches

⁵ Glover, R.E. and C.G. Balmer, 1954. River depletion resulting from pumping a well near a river. Am. Geophys. Union Trans. V. 35. pt 3, pp. 468-470.

⁶ Maasland, D.E. and M. W. Bittinger (eds.). 1963. Summaries of solved cases in rectangular coordinates, Appendix A. In Transient ground-water hydraulics symposium. Colorado State Univ. Proc., pub. CER63DEM-MWB70. 233 pp.

⁷ Gautschi, Walter. 1964. Error function and Fresnel integrals. In Abromowitz, Milton and Irene A. Stegun (eds.). Handbook of mathematical functions with formulas, graphs, and mathematical tables. U.S. Dept. Commerce. Natl. Bur. Standards. Appl. Math. Ser. 55, pp. 295-329.

⁸ Miller, C.D. and Durnford, D.S., 2005, Modified Use of the "SDF" Semi-Analytical Stream Depletion Model in Bounded Alluvial Aquifers, Hydrology Days, 146-159.

⁹ Zlotnik, V.A., 2004, A concept of maximum stream depletion rate for leaky aquifers in alluvial valleys, Water Resources Reseach, Vol. 40, W06507.

- d. Grid point generation
2. Complete Jenkins SDF calculations.
3. Modify the point shapefile to create the 10/50 management area.

Data Preparation

The following data were necessary for determining the 10/50 depletion line

- Aquifer transmissivity and specific yield
- Locations of perennial streams
- Grid of points within study area

Comment [SMP25]: Do you have to list these again here? They are in the section immediately preceding.

The aquifer properties used in the study were found in the report "Mapping of Aquifer Properties – Transmissivity and Specific Yield – for Selected River Basins in Central and Eastern Nebraska" published by the Conservation and Survey Division¹⁰ (CSD). The data from the report were converted to raster grids covering most of the study areas.

Comment [SMP26]: I wonder if this comment could be deleted; in the 2nd paragraph down it talks about a grid of points, and how that allows one to review and work with the data; that may be sufficient.

The location and extent of perennial streams were found from a CSD Geographic Information System shapefile¹¹. The main stems of each river and its tributaries were included in the calculations for individual basins.

A grid of points was created in ArcView¹² geographic information system. These points were spaced at one-mile intervals and within and beyond the study area. ArcView is a geographic information system program that allows the modeler to view, process, and query spatially referenced data.

Comment [GVS27]: You're referring to the modeled area aren't you?

Comment [SMP28]: Replace "that allows the modeler" with "used".

Jenkins Calculations

There are two equations necessary to make the 10/50 calculation at each point in the grid, the depletion percentage term and the SDF term. They are not equally related to each other but rather related by the nomograph shown in Figure 1. For example (see lines on nomograph), a depletion percentage of 2% relates to a dimensionless term value of 0.17.

Depletion percentage: v/Q_t

Dimensionless term: $\frac{tT}{a^2S}$

Where:

- v = volume of stream depletion during time t
- Q_t = net volume pumped during time t
- t = time during the pumping period since pumping began
- T = average transmissivity of the aquifer between the well and stream
- a = perpendicular distance between the well and stream
- S = average specific yield of the aquifer between the well and stream

¹⁰ Summerside, S., Olafsen-Lackey, S., Goeke, J., and Myers, W., 2005, Mapping of Aquifer Properties – Transmissivity and Specific Yield – for Selected River Basins in Central and Eastern Nebraska.

¹¹ http://csd.unl.edu/general/gis-datasets.asp#Streams_-_Simplified

¹² ArcView ESRI Corporation

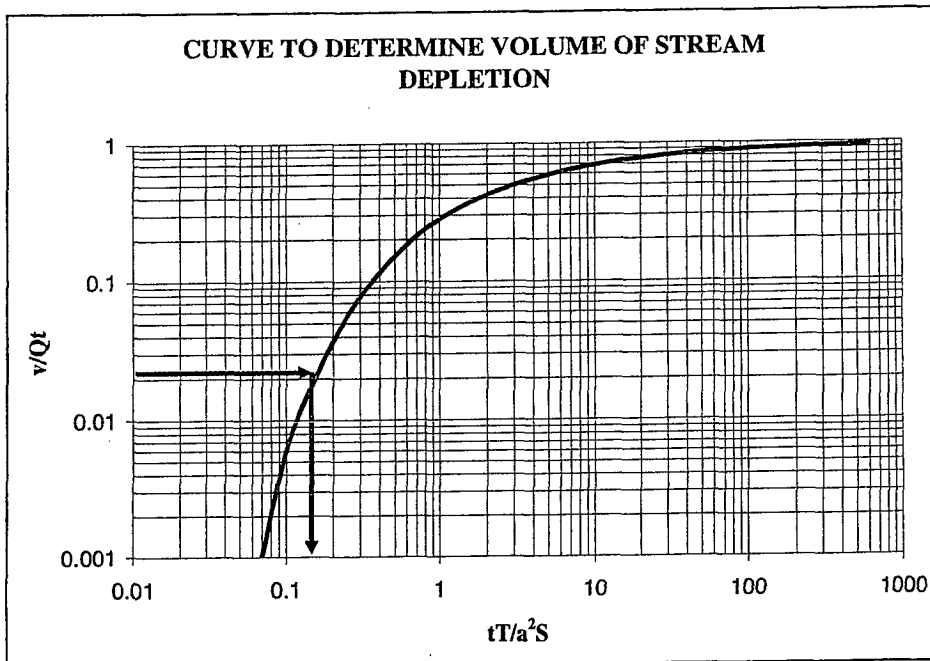


Figure 1. Relationship between the depletion term and SDF equation for Jenkins method.

A large number of calculations are necessary to make the 10/50 area determination. To facilitate the amount of calculation necessary, ArcView was customized to do much of the work. The goal of the process was to solve the equations for the 'a' or distance term and compare that to the actual distance from the point to the perennial stream. The known values for the equations are:

- t is 50 years or 18250 days.
- T is the aquifer transmissivity – which is determined by computing the average transmissivity along the perpendicular line between the well and the perennial stream in ArcView.
- S is the aquifer specific yield – which is determined by computing the average specific yield along the perpendicular line between the well and the perennial stream in ArcView.
- v/Qt is equal to 0.1 or 10%. From the nomograph, the corresponding dimensionless term value is equal to 0.358.

Once the 'a' or distance value is solved for, the actual perpendicular distance from the point to the perennial stream is determined. If the actual distance is less than the computed distance, the point is included as part of the 10/50 area. These points were stored as a point shape file for further analysis.

Comment [SMP29]: Reverse order for clarity

Comment [GVS30]: How was this done? In the real world a perpendicular line to the stream might not fit in the same grid (1 mi x 1 mi) as the computed value – if I am reading the computations correctly. Can this be done or do you just throw the data out if they don't fit?

Comment [SMP31]: This really needs to be rewritten. I am familiar with the technique and even I don't understand this section.

Analysis for SDF was only completed for points that fell in areas where the principle aquifer exists and is hydrologically connected to the stream. These areas were defined from information found in the CSD aquifer properties report.

Management Area Analysis

Many ArcView functions were used to convert the point shapefile into a polygon shapefile. The process included converting the point file into a series of one-mile polygon cells which the original point was the center of the cell. The polygon cells were then merged into a single polygon. The results polygon had its 'jagged' edges removed to produce a polygon with a 'smoothed' appearance. After smoothing some 10/50 areas extended into the areas previously defined by the CSD as consisting of no principle aquifer or having no hydrologic connection to the stream. The smoothed polygon was modified to remove such areas. Additional areas were removed from the area because of lack of data to put into the Jenkins method.

This final 10/50 polygon was then converted into the management area polygon by determining the portion of legal description sections that fell within the 10/50 polygon. If 50% or more of the section polygon fell within the 10/50 polygon, the section was included. The final edit to the management polygons was to clip the legal description sections on the far side of perennial streams that formed the boundaries to the study areas.

Results

Figures 2 and 3 show the areas where ground water and surface water are hydrologically connected. The shaded areas on each map represent the results of the above process.

Comment [GVS32]: Did the CSD aquifer properties report state where the aquifers are connected to the streams? For instance, a regional aquifer in a paleovalley in northwestern Colfax County is far removed from the hydraulic connection to the stream, albeit the regional aquifer still is hydrologically connected to the stream in Dodge County. However, the closest stream might place it as the East Fork of Maple Creek, which arguably is not directly connected to the regional aquifer—at least in a sense that Jenkins method can measure.

Comment [SMP33]: Which point file? The one containing results?

Comment [SMP34]: try replacing which with using

Comment [GVS35]: In the Methodology section you said "No modifications were made to Jenkins for this analysis because of the lack of published data necessary for the calculations. A lack of data didn't seem to stop you from using Jenkins method (or you seemed to indicate that it didn't), only modifications to it. Now you are removing areas because of a lack of data?"

Comment [SMP36]: It seems to me that if you are going to apply these to section boundaries anyway, is the smoothing process really needed on the initial results? Why not go straight from there to the section polygons? This is especially true if the smoothed line is only an intermediate product, and the line corrected to section polygons is the only one that gets released.

Comment [JS37]: What does this mean????



Figure 2. Loup River Basin 10/50 Area

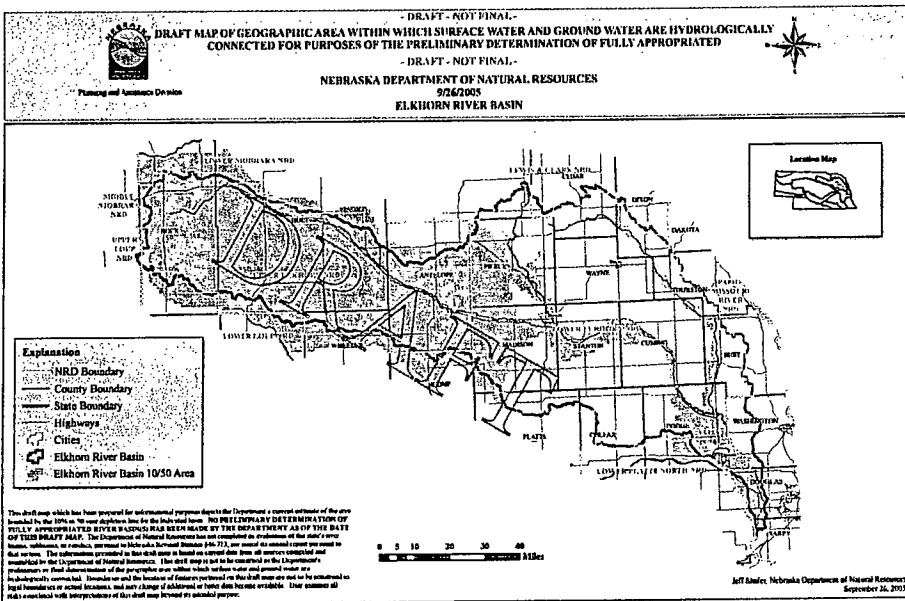


Figure 3. Elkhorn River Basin 10/50 Area

Comment [SMP38]: Would it be possible to add the aquifer boundaries (or aquifer absent) to this map? I think because that has such a big influence on your map of this area, it might be instructive to include (maybe add as a medium gray line so it doesn't distract attention from the shaded area, but is there if one wanted to look at it).

Comment [GVS39]: Very interesting map. Especially Dodge County. I would argue that there is more gw/sw interconnection along Maple Creek, but this map doesn't show that. Was this map generated from CSD aquifer properties report?

Future Impact of Current Ground Water Well Development and of Additional Ground Water Well Development (Lag Effect)

According to Nebraska Revised State Statute 46-713 the Department is to calculate the lag future impacts of the current level of ground water well development on surface water supplies into the reasonably foreseeable future. The Department shall also determine the future impacts if development continues. According to Department Rule Title 457 Chapter 24, twenty-five (25) years shall be the time period for consideration of future impacts¹³.

Like the analysis for the hydrologically connected area, this type of analysis can also be computed using Jenkins SDF equations and nomographs. Two separate analyses were performed: 1) determine the lag effects of the current well development and 2) determine the lag effects of current plus continued well development.

Comment [SMP40]: replace with "Similar to"

The following steps were taken to compute the lag effect:

1. Define the study area.
2. Determine which wells will be used to calculate the lag effect, depletive wells.
3. Project the locations of wells that will be part of the future development in the basin (Only considered for the second analysis, continued well development).
4. Calculate the annual volume of depletion the stream will experience due to the existing wells and future wells for the next 25 years
5. Convert annual acre-feet values to average annual cubic feet per second values to estimate stream impact.

Study Area

The study area for each river basin is defined by ground water boundary conditions. Those conditions include perennial base flow streams, non-hydrologically connected areas, and other conditions which cause constant ground water levels or prevent the flow of ground water.

Comment [GVS41]: Static?? or constant over what time period?

Depletive Wells

Not every well within in the Department well database was used to calculate lag effects. Only active wells that had a use defined as irrigation, industrial, public water supply, or unprotected public water supply were included. These were selected because they will create the most impact of the lag. Other depletive wells such as livestock watering wells and domestic wells were not included because of the relatively small amount of water they use and because the database is not complete for these types of wells.

Comment [SMP42]: Replace with "Only active irrigation, industrial and municipal wells were selected for this analysis, as these cause most of the lag impacts." If you do this, delete the following sentence:

Future Well Development

Future development was estimated by looking at the current rate of well development and location of existing well development in the study area.

Comment [SMP43]: I think you can safely delete the part about the incomplete database, because in truth the small amount of consumption is sufficient reason by itself as to why they should be excluded, and talking about the incomplete database makes that less clear.

Comment [GVS44]: examining??

Figure 4 shows the cumulative well development within the Loup River study area. The blue line shows the cumulative number of registered depletive wells in the basin and the red line shows the linear trend for the last 20 years. The slope of the line shows 154 new wells per year. Therefore the future well development estimation for the Loup River study area was 154 wells per year for the next 25 years.

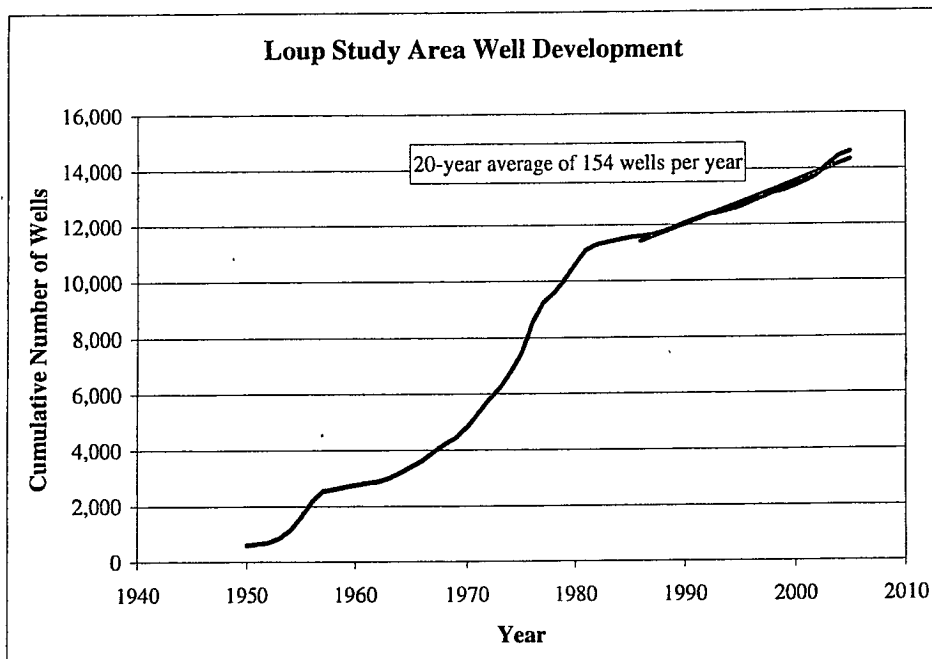


Figure 4. Cumulative Well Development in the Loup River Study Area.

The future wells were located geographically within the study area by overlaying each well on a randomly selected existing well within the study area. This method for locating the wells was selected because the existing wells seem to be clustered together and future development will likely occur near areas where development has already occurred. Figure 5 shows the location of existing depletive wells within the Loup River Basin.

Annual Depletions Calculations

In order to estimate the future stream depletions, the level of depletion for each year between 2005 and 2030 must be calculated. This depletion value can be calculated for each existing depletive well in the study area using Jenkins SDF method. The methodology equations used include the depletion percentage term and the dimensionless term. They are not equally related to each other but rather related by the nomograph shown in Figure 6.

Comment [SMP45]: Can you just refer back to the earlier figure (fig. 1) or are you required to have it in this section as well?

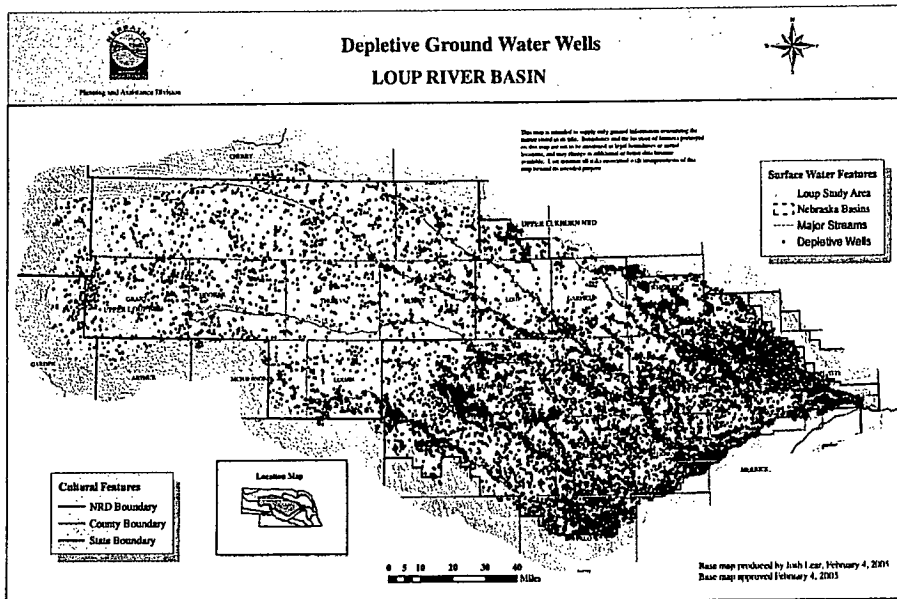


Figure 5. Loup River Basin Depletive Wells.

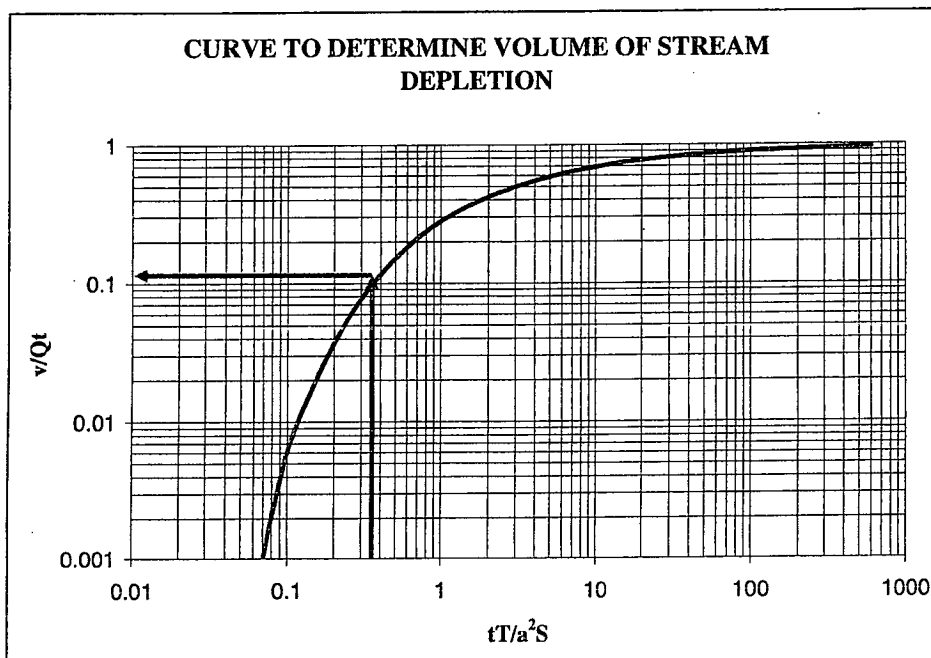


Figure 6. Relationship between the depletion term and SDF equation for Jenkins method.

Depletion percentage: v/Q_t

Dimensionless term: $\frac{tT}{a^2S}$

Where:

v = cumulative volume of stream depletion during time t
 Q_t = cumulative volume pumped during time t
 t = time during the pumping period since pumping began
 T = average transmissivity of the aquifer between the well and stream
 a = perpendicular distance between the well and stream
 S = average specific yield of the aquifer between the well and stream

The goal of the depletion analysis is to solve for the 'v' value of the depletion term for each year. The rest of the variables in the equation are known.

- t is the well age – which can be found in the well database by subtracting the installation year from the analysis year.
- T is the aquifer transmissivity – which is determined by computing the average transmissivity along the perpendicular line between the well and the perennial stream in ArcView.
- a is the distance from the well to the perennial stream – which is a known based on an ArcView calculation.
- S is the aquifer specific yield – which is determined by computing the average specific yield along the perpendicular line between the well and the perennial stream in ArcView.
- Q is the annual volume of water pumped for consumptive use in acre-feet. This is calculated by multiplying the crop irrigation need¹³ by an average field size in acres. The average field size is calculated by taking the average number of acres for each well in the database and then multiplying by 0.75. The multiplier is used because experience with the well database has shown that when large areas are considered, the well database over reports acres by approximately 33%. Industrial and public water supply wells are treated the same as irrigation wells for this analysis.

Each well in the basin has this type of analysis completed and recorded into the database. The values in the database for these wells are modified if the well falls within multiple basin study areas. If the well falls into two basin study areas, the depletion is divided by 2, if it falls within three basin study areas, the depletion is divided by 3. This type of modification is done so that the total depletion is not overestimated in overlapping areas.

The final annual results for such an analysis can be seen in Table 1. Once the process has been repeated for each year from 2006 to 2030, the volume depleted in year 'X' can be calculated by subtracting the cumulative depletion for year 'X-1' from the cumulative depletion calculated for year 'X'.

¹³ Dr. Derrel Martin, College of Engineering and Technology, Department of Biological Systems Engineering, University of Nebraska, Publication in process.

Comment [SMP46]: I would get rid of this list of variables, you have a bulleted list of them below, just add a few words to that list instead of doing the whole list twice.

Comment [GVS47]: What was done regarding changing field conditions (corn to alfalfa, corn to soybeans, crop to furrow, etc.)? Did you use a single CIR throughout the time period that you used?

Comment [GVS48]: Using the term average implies that you are using the whole rather than a subset, which is apparent (by the next sentence) is what you did. However, I would argue that you would have gotten better results using county wide statistics. How can you use state wide average statistics on basin wide analyses? Seems that you are comparing apples and oranges, but then I don't see any results of the analyses, only text. Maybe the difference between them (state wide versus county or basin wide) is insignificant, but that would have to be proven.

Comment [GVS49]: This doesn't make any sense. Experience by some unknown person(s) has shown that large areas (or outliers) over report acres by about 33 percent, so you decided to use a fudge factor of 75 percent. Do small areas (also possible outliers) under report by a percentage. Where does 75 percent come from? I don't see a connection. What about the average areas, does the experienced person(s) note how well these areas are reported?

Comment [JS50]: Add an example here to illustrate the process.

Comment [JS51]: Short discussion on why? Analysis based on distance between 2 streams with that being the main parameter in the Jenkins that would direct the impact.

Comment [GVS52]: In the methodology section you said no modifications were done to the Jenkins method, here you say that the SDF is divided by 2 or 3. I agree with Jennifer in that I think you need to expand this discussion. Do the other states do this modification also? Are there many wells that fall into this category (I think there would be limited wells)? You are referring to a river basin aren't you? If so, how do wells fall into multiple river basins – I think few would.

Year	Cumulative Depletion (Acre-Feet)	Annual Depletion (Acre-Feet)
2005	3,814,368	157,412
2006	3,974,815	160,447
2007	4,138,043	163,228
2008	4,304,249	166,206
2009	4,473,398	169,149
2010	4,645,100	171,702
2011	4,819,213	174,113
2012	4,995,949	176,736
2013	5,175,176	179,227
2014	5,357,076	181,900
2015	5,541,308	184,232
2016	5,727,910	186,602
2017	5,916,848	188,938
2018	6,107,993	191,145
2019	6,301,696	193,703
2020	6,497,913	196,217
2021	6,696,558	198,645
2022	6,897,714	201,156
2023	7,101,208	203,494
2024	7,307,043	205,835
2025	7,515,023	207,980
2026	7,725,565	210,542
2027	7,938,715	213,150
2028	8,154,208	215,493
2029	8,371,876	217,668
2030	8,592,034	220,158

Table 1. Example of Cumulative and Annual Depletion Table.

Comment [SMP53]: Why not show this as a figure/graph?

Comment [GVS54]: I don't get the cumulative depletion to add up when I add an annual depletion factor in. For instance if I start with (2008) 4,304,249 and add 166,206 I get 4,470,455 not 4,473,398. Am I missing something?

Estimated Stream Flow Impact

The results from the annual depletion analysis can then be converted from annual acre-feet of depletion to an average annual cubic feet per second of water by dividing the difference between the 2005 and the 2030 value by 723.8 (the conversion factor for acre-feet/year to cfs). For the table above, the results would be $(220,158 - 157,412) / 723.8$ or 86.7 cfs. These values can then be used for estimating the total change in stream flow over time.

Comment [JS55]: Add column of annual cfs values or change in cfs to table.