

Instructions for Digitizing Non-Federal Reservoirs

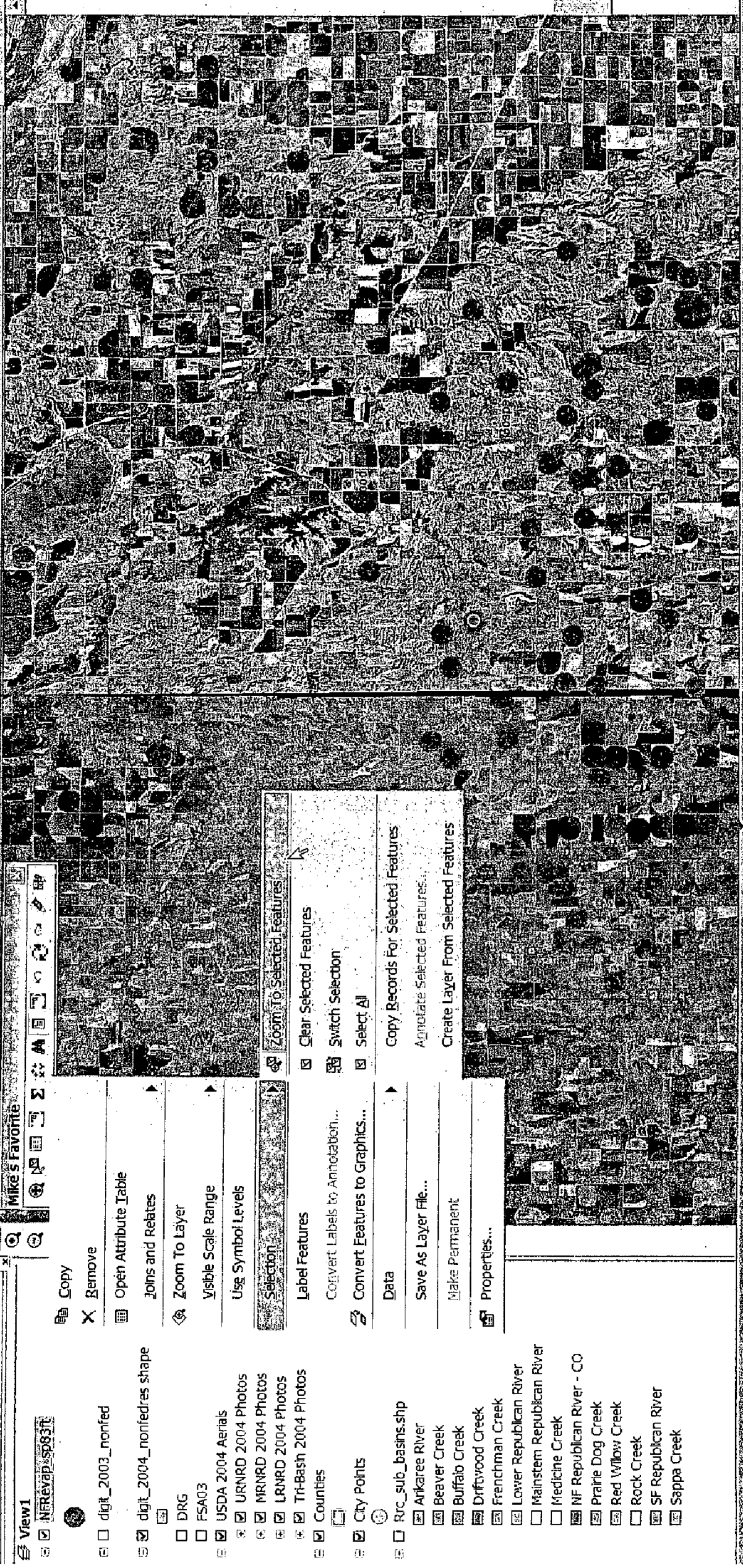
1. Open map document "Small Non-Fed ResXX.mxd" , where XX is the current version number of the map document. It is a good idea to save the file under a new version number after a few hours of digitizing.
2. Once the map document is open make sure the attribute table for shapefile "NFRevap_sp83ft" is open and placed to the bottom left of the monitor screen. It should take up the left half of the screen.
3. The bottom right half of the screen should be occupied by the attribute table for shapefile "digit_2004_nonfedres".
4. Start an edit session with "digit_2004_nonfedres" as the target layer and "Create New Feature" as the task.
5. Find next digitizing feature on checklist and locate corresponding record by "Evap_id" in the attribute table for shapefile "digit_2004_nonfedres".
6. Right click on "NFRevap_sp83ft" in the table of contents area of the map document, then left click on "Selection" and left click on "Zoom to Selected Features".
7. Use zoom-in tool to drag a small box around the selected point feature of the "NFRevap_sp83ft" shapefile.
8. Use the sketch tool to digitize around the reservoir. If the reservoir is dry, make a note on the checklist in the "Notes" column next to the "Evap_ID" column. Make sure to write down the Evap_ID too. If the reservoir is dry, then draw a very small rectangular polygon as a placeholder in the database.
9. When done drawing the wetted perimeter of the reservoir click in the "Id" column for the record for newly created polygon in the attribute table for shapefile "digit_2004_nonfedres". Enter the correct Evap_id number and then click in another table cell to make sure the number is recorded.
10. Left click on the "Save Edits" button or go to the "Editor" menu and select "Save Edits"
11. Return to step five and continue until through with the edit session.
12. When through with editing go to the "Editor" menu and select "Stop Editing".
13. Save map document under an incremented version number and exit ArcMap.

File Edit View Insert Selection Tools Window Help

Layers: NFRRevap_sp83ft | digit_2004_nonfedres shape | Editor | Task: Create New Feature | 1:163,373 | Target | 100% | 10' | 10'

View1

- NFRRevap_sp83ft
- digit_2003_nonfed
- digit_2004_nonfedres shape
- DRG
- FSA03
- USDA 2004 Aerials
- URNRD 2004 Photos
- MRNRD 2004 Photos
- LRNRD 2004 Photos
- Tr-Basin 2004 Photos
- Counties
- City Points
- Rrc_sub_basins.shp
- Arkaree River
- Beaver Creek
- Buffalo Creek
- Driftwood Creek
- Frenchman Creek
- Lower Republican River
- Mainstem Republican River
- Medicine Creek
- NF Republican River - CO
- Prairie Dog Creek
- Red Willow Creek
- Rock Creek
- SF Republican River
- Sappa Creek



Mike's Favorite

- Copy
- Remove
- Open Attribute Table
- Joins and Relates
- Zoom To Layer
- Visible Scale Range
- Use Symbol Levels
- Selection
- Label Features
- Convert Labels to Annotation...
- Convert Features to Graphics...
- Data
- Save As Layer File...
- Make Permanent
- Properties...
- Clear Selected Features
- Switch Selection
- Select All
- Copy Records For Selected Features
- Annotate Selected Features...
- Create Layer From Selected Features

Attributes of NFRRevap_sp83ft

FID	Shape*	EVAP_ID	DAMN1	Options
59	20 Point			
60	21 Point			
61	22 Point			
64	23 Point	ISCHURR DAM NO 2		
65	24 Point	ISCHURR DAM NO 1		
67	25 Point	BROCKMEIER DAM		
69	26 Point			
70	27 Point	WHALEY-REYNOLDS DAM NO 2		
74	28 Point			

Record: 13 | Show: All | Selected: 1 (out of 643 Selected) | Options

Attributes of digit_2004_nonfedres shape

FID	Shape*	OBJECTID	Id	Shana_Land	Shape Area
10	Polygon	0	34	0	0
11	Polygon	0	38	0	0
12	Polygon	0	40	0	0
13	Polygon	0	46	0	0
14	Polygon	0	49	0	0
15	Polygon	0	50	0	0
16	Polygon	0	51	0	0
17	Polygon	0	52	0	0
18	Polygon	0	54	0	0
19	Polygon	0	55	0	0

Record: 14 | Show: All | Selected: 0 (out of 20 Selected) | Options

1598928.35 313792.93 Feet

Start | ArcCatalog | OnTime | ScreenSez | 10:36 AM

