



Water-Data Report NE-2005

06821500 ARIKAREE RIVER AT HAIGLER, NE

KANSAS RIVER BASIN

LOCATION.--Lat 40°01'45", long 101°58'03", in NE ¼ NE ¼ sec.29, T.1 N., R.41 W., Dundy County, Hydrologic Unit 10250001, on right bank at downstream side of bridge on U.S. Highway 34, 1.3 mi upstream from Burlington Northern Inc. bridge, 1.9 mi upstream from confluence with North Fork Republican River, 2 mi northwest of Haigler, and 3.2 mi downstream from Kansas-Nebraska state line.

DRAINAGE AREA.--1,700 mi² of which 680 mi² probably is noncontributing.

WATER-DISCHARGE RECORDS

REVISED RECORDS.--WSP 1919: 1951, 1954, 1956, 1960. WDR NE-94-1: Drainage area.

PERIOD OF RECORD.--October 1931 to current year. Monthly discharge only for some periods, published in WSP 1310.

GAGE.--Water-stage recorder and crest-stage gage. Datum of gage is 3,250.98 ft above sea level. See WSP 1919 for history of changes prior to Sept. 29, 1964. Sept. 29, 1964 to Apr. 25, 1982 on left bank 57 ft downstream from bridge at present datum. Data collection platform at station.

REMARKS.--Record fair except for daily discharges greater than 10 ft³/s, which are poor. Natural flow affected by ground-water withdrawals and diversions for irrigation of about 1,500 acres in Colorado and by return flow from Haigler Canal.

06821500 ARIKAREE RIVER AT HAIGLER, NE—Continued

DISCHARGE, CUBIC FEET PER SECOND
WATER YEAR OCTOBER 2004 TO SEPTEMBER 2005
DAILY MEAN VALUES

Day	Oct	Nov	Dec	Jan	Feb	Mar	Apr	May	Jun	Jul	Aug	Sep
1	0.02	0.00	0.00	0.00	0.00	0.00	0.00	9.8	5.2	1.3	0.00	0.06
2	1.1	0.00	0.00	0.00	0.00	0.00	0.00	10	4.7	0.96	0.00	0.00
3	1.7	0.00	0.00	0.00	0.00	0.00	0.00	9.0	3.5	7.2	0.00	0.06
4	1.9	0.00	0.00	0.00	0.00	0.00	0.00	4.2	7.3	8.0	0.00	0.34
5	1.7	0.00	0.00	0.00	0.00	0.00	0.00	2.4	1.3	55	0.00	0.02
6	0.26	0.00	0.00	0.00	0.00	0.00	0.00	3.3	0.78	12	0.00	0.00
7	0.22	0.00	0.00	0.00	0.00	0.00	0.00	3.5	0.61	9.1	0.00	0.00
8	0.00	0.00	0.00	0.00	0.00	0.00	0.00	1.1	0.43	8.5	0.00	0.00
9	0.00	0.00	0.00	0.00	0.00	0.00	0.00	1.0	5.7	4.4	0.00	0.00
10	0.00	0.00	0.00	0.00	0.00	0.00	0.00	0.73	8.2	3.9	0.00	0.00
11	0.00	0.00	0.00	0.00	0.00	0.00	0.00	4.9	11	2.6	0.00	0.00
12	0.00	0.00	0.00	0.00	0.00	0.00	0.00	14	9.3	1.6	0.00	0.00
13	0.00	0.00	0.00	0.00	0.00	0.00	0.00	4.6	12	2.1	0.00	0.00
14	0.00	0.00	0.00	0.00	0.00	0.00	0.00	3.3	5.8	1.8	0.00	0.00
15	0.53	0.00	0.00	0.00	0.00	0.00	0.00	2.8	5.1	2.2	0.00	0.00
16	0.55	0.00	0.00	0.00	0.00	0.00	0.00	2.8	4.7	1.2	0.00	0.00
17	0.00	0.00	0.00	0.00	0.00	0.00	0.00	1.9	4.5	1.0	0.00	0.00
18	0.00	0.00	0.00	0.00	0.00	0.00	0.00	0.60	4.0	1.1	0.00	0.00
19	0.00	0.00	0.00	0.00	0.00	0.00	0.00	1.3	6.3	0.78	0.00	0.00
20	0.00	0.00	0.00	0.00	0.00	0.00	0.00	0.56	6.8	0.00	0.00	0.00
21	0.00	0.00	0.00	0.00	0.00	0.00	0.45	0.31	5.9	0.00	0.00	0.01
22	0.00	0.00	0.00	0.00	0.00	0.00	5.8	0.09	4.5	0.00	0.03	0.00
23	0.00	0.00	0.00	0.00	0.00	0.00	7.3	0.11	3.0	0.00	0.04	0.00
24	0.00	0.00	0.00	0.00	0.00	0.00	7.8	5.6	4.6	0.00	30	0.00
25	0.00	0.00	0.00	0.00	0.00	0.00	9.0	35	7.0	0.00	37	0.00
26	0.00	0.00	0.00	0.00	0.00	0.00	6.8	4.3	2.7	0.00	2.5	0.00
27	0.00	0.00	0.00	0.00	0.00	0.00	5.6	4.6	4.9	0.00	1.2	0.00
28	0.00	0.00	0.00	0.00	0.00	0.00	4.0	3.1	3.5	0.00	0.73	0.00
29	0.00	0.00	0.00	0.00	---	0.00	8.2	2.4	3.9	0.00	0.75	0.00
30	0.00	0.00	0.00	0.00	---	0.01	10	3.4	3.5	0.00	0.26	0.00
31	0.00	---	0.00	0.00	---	0.00	---	6.6	---	0.00	0.17	---
Total	7.98	0.00	0.00	0.00	0.00	0.01	64.95	147.30	150.72	124.74	72.68	0.49
Mean	0.26	0.00	0.00	0.00	0.00	0.00	2.17	4.75	5.02	4.02	2.34	0.02
Max	1.9	0.00	0.00	0.00	0.00	0.01	10	35	12	55	37	0.34
Min	0.00	0.00	0.00	0.00	0.00	0.00	0.00	0.09	0.43	0.00	0.00	0.00
Ac-ft	16	0.00	0.00	0.00	0.00	0.02	129	292	299	247	144	1.0

STATISTICS OF MONTHLY MEAN DATA FOR WATER YEARS 1932 - 2005, BY WATER YEAR (WY)

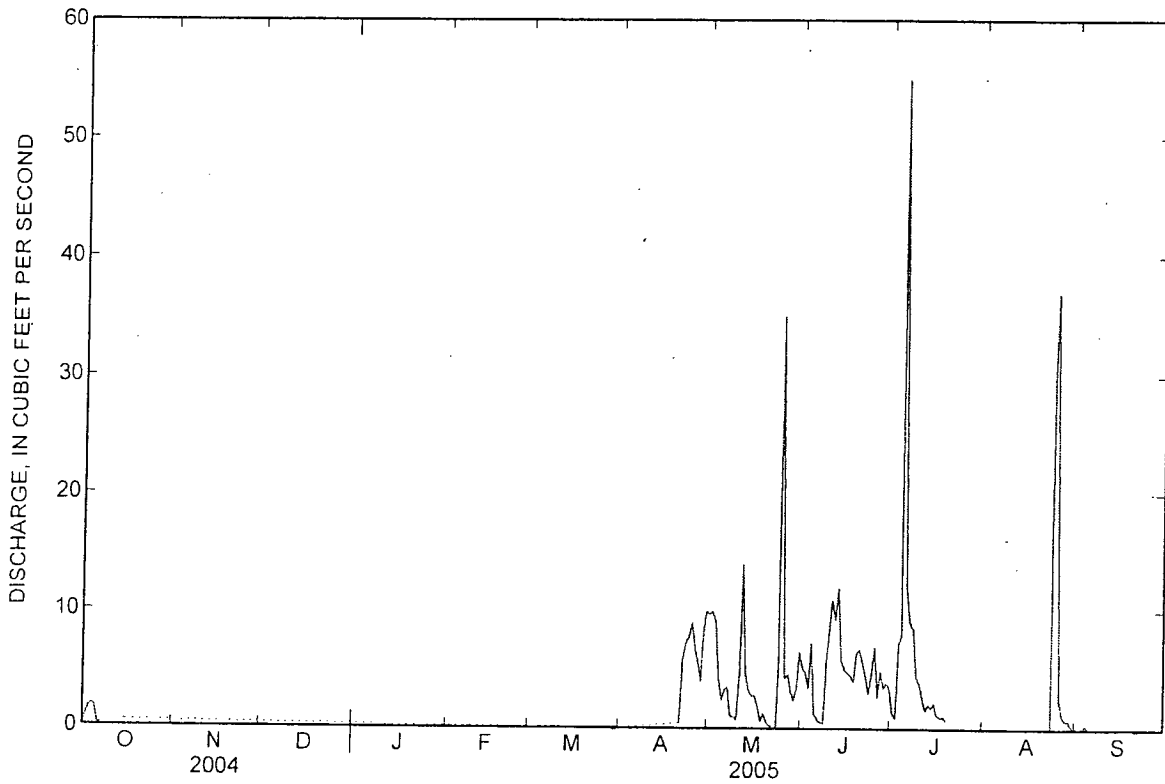
	Oct	Nov	Dec	Jan	Feb	Mar	Apr	May	Jun	Jul	Aug	Sep
Mean	9.28	7.62	6.03	7.15	14.6	26.1	21.6	38.0	37.3	18.5	17.3	14.2
Max	39.8	31.8	28.3	24.0	67.0	400	78.0	709	599	193	111	140
(WY)	(1943)	(1947)	(1939)	(1934)	(1937)	(1960)	(1944)	(1935)	(1935)	(1962)	(1938)	(1938)
Min	0.26	0.00	0.00	0.00	0.00	0.00	0.00	0.83	0.07	0.00	0.00	0.00
(WY)	(2005)	(2002)	(2002)	(2003)	(2003)	(2004)	(2004)	(2004)	(2002)	(2002)	(1952)	(2002)

06821500 ARIKAREE RIVER AT HAIGLER, NE—Continued

SUMMARY STATISTICS

	Calendar Year 2004		Water Year 2005		Water Years 1932 - 2005	
Annual total	170.90		568.87			
Annual mean	0.47		1.56		18.1	
Highest annual mean					127	1935
Lowest annual mean					0.28	2002
Highest daily mean	9.9	Jul 6	55	Jul 5	17,000	May 31, 1935
Lowest daily mean	0.00	Jan 1	0.00	Oct 8	0.00	Jul 21, 1932
Annual seven-day minimum	0.00	Jan 1	0.00	Oct 8	0.00	Jul 30, 1934
Maximum peak flow			123	Aug 24	50,000	May 31, 1935
Maximum peak stage			7.68	Aug 24	11.20a	May 31, 1935
Annual runoff (ac-ft)	339		1,130		13,110	
10 percent exceeds	1.7		5.0		29	
50 percent exceeds	0.00		0.00		7.7	
90 percent exceeds	0.00		0.00		0.37	

a Site and datum then in use





Water-Data Report NE-2005

06823000 NORTH FORK REPUBLICAN RIVER AT COLORADO-NEBRASKA STATE LINE

KANSAS RIVER BASIN

LOCATION.--Lat 40°04'10", long 102°03'03", in NW ¼ SW ¼ sec.10, T.1 N., R.42 W., Dundy County, Hydrologic Unit 10250002, on right bank 100 ft east of Colorado-Nebraska State line, 9.5 mi upstream from confluence with Arikaree River, and at mile 448.

DRAINAGE AREA.--2,370 mi² of which 2,196 mi² probably is noncontributing.

WATER-DISCHARGE RECORDS

REVISED RECORDS.--WSP 1240: 1947(M). WSP 1390: 1934. WDR NE-94-1: Drainage area.

PERIOD OF RECORD.--October 1930 to current year. Prior to October 1932, published as North Fork of Arikaree River at Colorado-Nebraska State line. Monthly discharge only for some periods, published in WSP 1310.

GAGE.--Water-stage recorder. Steel piling control since January 1965. Datum of gage is 3,336.09 ft above sea level. Prior to Oct. 17, 1934, non-recording gage at present site and datum. Data Collection platform at station.

REMARKS.--Records fair. Natural flow affected by diversion in Haigler Canal for irrigation of about 2,700 acres in Colorado and Nebraska.

06823000 NORTH FORK REPUBLICAN RIVER AT COLORADO-NEBRASKA STATE LINE—Continued

DISCHARGE, CUBIC FEET PER SECOND
WATER YEAR OCTOBER 2004 TO SEPTEMBER 2005
DAILY MEAN VALUES
 [e, estimated]

Day	Oct	Nov	Dec	Jan	Feb	Mar	Apr	May	Jun	Jul	Aug	Sep
1	22	33	e41	e43	47	e43	40	14	62	12	2.9	5.6
2	27	34	e39	e43	44	45	40	13	59	22	2.9	6.2
3	23	37	e38	e45	42	44	41	12	62	35	3.6	6.4
4	24	40	e38	e46	41	44	40	11	61	22	7.6	9.6
5	25	40	e39	e47	41	44	37	12	60	32	14	6.8
6	26	40	e40	e48	e39	43	35	13	59	36	6.3	6.0
7	24	41	e40	e49	e37	55	32	12	58	25	5.3	6.0
8	23	41	41	e50	e36	e51	30	13	50	19	6.2	6.4
9	20	40	44	e49	e37	e40	30	13	32	16	4.4	6.0
10	17	40	48	e49	e36	e41	38	11	32	14	4.1	6.6
11	15	41	47	49	e35	e45	52	17	49	12	5.7	6.9
12	15	40	47	47	e35	e47	48	61	55	12	6.4	7.2
13	15	40	47	e44	e35	e48	44	44	46	10	6.6	5.1
14	17	40	48	e42	e38	e50	45	32	38	9.9	7.5	4.9
15	20	40	47	e43	e39	e47	43	25	35	12	6.3	5.1
16	20	40	47	e45	38	e40	42	27	33	9.2	5.1	8.0
17	21	40	47	47	37	36	40	22	30	9.4	8.6	6.7
18	21	40	47	48	34	35	41	18	27	10	15	6.1
19	22	41	47	48	35	35	37	17	24	9.9	17	5.7
20	22	42	e46	46	35	36	33	12	23	9.2	13	6.1
21	22	43	e45	48	36	37	39	12	18	9.5	7.6	5.0
22	21	42	e45	53	37	36	31	8.7	17	4.3	6.6	5.3
23	26	43	e45	52	38	37	19	6.3	14	3.1	6.7	6.4
24	25	42	e44	51	38	38	14	10	13	3.0	10	5.7
25	23	43	e42	52	e39	37	12	67	21	3.4	12	6.2
26	27	43	e39	51	e39	36	9.9	63	25	4.2	13	8.0
27	28	43	e38	46	e41	39	12	52	17	4.1	12	7.9
28	31	44	e38	45	e41	41	11	41	16	4.0	13	9.1
29	33	44	e40	48	---	41	12	37	17	3.3	9.5	7.8
30	33	e42	e41	49	---	43	13	36	13	3.2	6.6	7.8
31	32	---	e43	49	---	42	---	58	---	2.8	5.7	---
Total	720	1,219	1,338	1,472	1,070	1,296	960.9	790.0	1,066	381.5	251.2	196.6
Mean	23.2	40.6	43.2	47.5	38.2	41.8	32.0	25.5	35.5	12.3	8.10	6.55
Max	33	44	48	53	47	55	52	67	62	36	17	9.6
Min	15	33	38	42	34	35	9.9	6.3	13	2.8	2.9	4.9
Ac-ft	1,430	2,420	2,650	2,920	2,120	2,570	1,910	1,570	2,110	757	498	390

STATISTICS OF MONTHLY MEAN DATA FOR WATER YEARS 1935 - 2005, BY WATER YEAR (WY)

	Oct	Nov	Dec	Jan	Feb	Mar	Apr	May	Jun	Jul	Aug	Sep
Mean	35.7	54.9	58.8	58.8	60.3	62.9	55.3	39.0	32.9	17.7	17.7	24.6
Max	67.1	83.5	74.7	73.4	76.8	85.8	85.7	104	113	93.8	72.4	128
(WY)	(1963)	(1957)	(1954)	(1953)	(1960)	(1960)	(1980)	(1951)	(1962)	(1962)	(1950)	(1951)
Min	11.1	26.3	34.4	39.4	35.2	41.7	21.3	7.24	5.80	3.76	4.12	5.78
(WY)	(1979)	(2004)	(2002)	(1979)	(2002)	(2002)	(1999)	(2000)	(2002)	(2002)	(1940)	(1978)

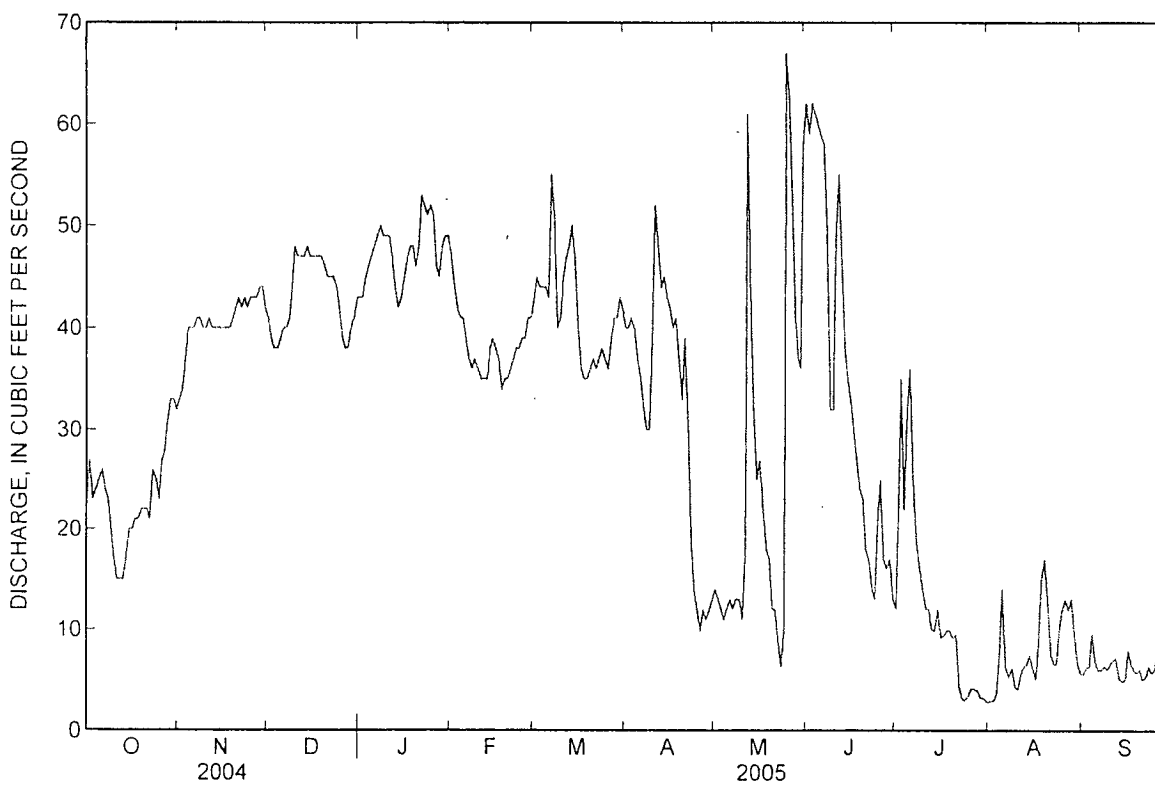
06823000 NORTH FORK REPUBLICAN RIVER AT COLORADO-NEBRASKA STATE LINE—Continued

SUMMARY STATISTICS

	Calendar Year 2004		Water Year 2005		Water Years 1935 - 2005	
Annual total	9,819.1		10,761.2			
Annual mean	26.8		29.5		43.0	
Highest annual mean					65.3	1951
Lowest annual mean					22.5	2002
Highest daily mean	57	Apr 23	67	May 25	761	May 15, 1951
Lowest daily mean	2.7	Jul 1	2.8	Jul 31	1.5	Sep 12, 1999
Annual seven-day minimum	3.1	Jun 28	3.2	Jul 28	2.3	Aug 5, 1940
Maximum peak flow			93a	May 12	2,110	Apr 28, 1947
Maximum peak stage			2.53b	Jan 7	5.92	Apr 28, 1947
Annual runoff (ac-ft)	19,480		21,340		31,140	
10 percent exceeds	46		48		71	
50 percent exceeds	31		35		46	
90 percent exceeds	5.3		6.3		8.3	

a Stage 1.30 ft

b Backwater from ice





Water-Data Report NE-2005

06823500 BUFFALO CREEK NEAR HAIGLER, NE

KANSAS RIVER BASIN

LOCATION.--Lat 40°02'22", long 101°52'00", in SE ¼ NW ¼ sec.20, T.1 N., R.40 W., Dundy County, Hydrologic Unit 10250002, on upstream side of bridge, 0.4 mi upstream from mouth, and 4 mi northeast of Haigler.

DRAINAGE AREA.--172 mi² of which 163.4 mi² probably is noncontributing.

WATER-DISCHARGE RECORDS

REVISED RECORDS.--WSP 2119: 1948-50(M), 1957(M). WDR NE-94-1: Drainage area.

PERIOD OF RECORD.--October 1940 to current year.

GAGE.--Water-stage recorder. Datum of gage is 3,189.00 ft above sea level. Prior to Sept. 19, 1980, at site 0.5 mi upstream at datum 15.57 ft higher. Sept. 18, 1980 to June 4, 1996 on left bank 15 ft upstream from county highway bridge at datum 0.10 ft lower. June 4, 1996 to Nov. 7, 1996 135 ft downstream from county highway bridge, at datum 0.10 ft lower. Data collection platform at station.

REMARKS.--Records fair except for estimated daily discharges, which are poor. Natural flow affected by diversion about 1 mi upstream for irrigation of 880 acres.

06823500 BUFFALO CREEK NEAR HAIGLER, NE—Continued

DISCHARGE, CUBIC FEET PER SECOND
WATER YEAR OCTOBER 2004 TO SEPTEMBER 2005
DAILY MEAN VALUES

[e, estimated]

Day	Oct	Nov	Dec	Jan	Feb	Mar	Apr	May	Jun	Jul	Aug	Sep
1	3.4	3.0	e2.8	5.1	4.8	3.6	4.2	5.5	4.2	0.00	0.49	0.75
2	2.5	3.0	e3.0	5.7	4.7	3.7	3.8	4.9	3.1	0.00	0.22	0.85
3	2.2	2.6	e3.5	5.9	4.7	4.0	3.5	4.2	3.1	0.30	0.11	1.1
4	2.1	1.6	e4.0	5.8	4.7	3.9	4.1	4.0	3.5	0.56	0.02	0.97
5	3.5	1.7	e4.5	e4.8	4.8	3.9	3.9	3.9	2.8	0.51	0.00	0.86
6	4.2	1.6	e5.0	e3.1	4.6	4.0	3.8	4.1	2.0	0.57	0.00	1.2
7	5.6	1.4	e5.2	e2.2	4.5	3.7	3.4	4.5	1.4	0.26	0.00	1.2
8	8.7	1.7	e5.4	e3.5	e4.5	3.9	3.3	4.9	1.00	0.06	0.00	0.00
9	6.8	1.9	e5.4	e5.5	e4.5	4.5	3.1	4.4	0.73	0.10	0.00	1.1
10	5.4	2.0	5.3	e7.3	e4.5	3.9	4.1	4.0	1.6	0.05	0.00	0.91
11	4.8	2.0	5.3	e7.5	e4.6	4.2	5.2	3.8	8.4	0.00	0.00	0.91
12	4.6	1.8	5.0	e7.6	e4.6	4.1	5.0	5.4	5.5	0.00	0.00	0.76
13	4.5	1.7	4.3	e7.6	e4.6	4.1	4.6	8.0	5.6	0.00	e0.00	0.72
14	4.4	1.9	e3.7	7.2	4.6	4.1	4.2	5.6	4.3	0.00	e0.00	1.0
15	4.5	1.9	e4.8	6.3	4.5	4.1	4.1	4.5	2.5	0.00	e0.00	1.3
16	4.5	2.3	e5.1	e5.8	e4.5	3.9	4.2	4.1	2.1	0.00	e0.30	1.5
17	4.4	2.4	5.1	e5.6	e4.5	4.1	4.3	3.9	2.0	0.00	e0.60	1.5
18	4.4	3.0	5.1	e5.4	e4.7	3.7	4.4	3.4	1.6	0.00	e0.90	1.6
19	4.3	3.1	5.0	e5.6	4.8	3.7	4.2	3.2	1.5	0.00	e1.3	2.0
20	4.2	2.5	5.2	e5.6	4.4	3.8	4.1	3.2	1.3	0.00	e1.5	2.1
21	4.2	2.2	4.6	e5.6	4.4	4.3	5.5	3.0	1.2	0.00	e1.7	2.2
22	3.8	2.4	4.8	e5.8	3.8	4.5	5.0	2.6	0.28	0.00	e2.0	1.8
23	3.4	2.6	e3.0	e5.8	4.1	4.4	4.6	2.6	0.00	0.00	e2.2	1.9
24	3.4	2.3	e2.0	e5.8	3.9	4.1	4.4	3.3	0.00	0.00	e2.4	2.1
25	3.3	2.4	e1.6	5.8	3.9	3.9	4.4	4.2	0.00	0.00	e2.6	2.2
26	3.4	2.6	e1.8	5.5	4.0	4.1	4.2	3.9	0.00	0.00	2.8	2.4
27	3.7	3.8	e2.2	5.4	3.8	4.1	4.4	3.3	0.89	0.00	2.2	2.7
28	4.0	4.0	e3.0	5.3	3.6	4.1	4.5	2.6	0.02	0.00	0.91	2.6
29	3.6	3.8	e3.4	5.2	---	4.5	5.4	2.6	0.02	0.00	0.00	2.6
30	3.2	e3.3	e4.2	5.2	---	6.6	5.7	3.3	0.00	0.18	0.49	2.8
31	3.3	---	5.6	5.1	---	5.3	---	5.4	---	1.0	0.95	---
Total	128.3	72.5	128.9	173.6	123.6	128.8	129.6	126.3	60.64	3.59	23.69	45.63
Mean	4.14	2.42	4.16	5.60	4.41	4.15	4.32	4.07	2.02	0.12	0.76	1.52
Max	8.7	4.0	5.6	7.6	4.8	6.6	5.7	8.0	8.4	1.0	2.8	2.8
Min	2.1	1.4	1.6	2.2	3.6	3.6	3.1	2.6	0.00	0.00	0.00	0.00
Ac-ft	254	144	256	344	245	255	257	251	120	7.1	47	91

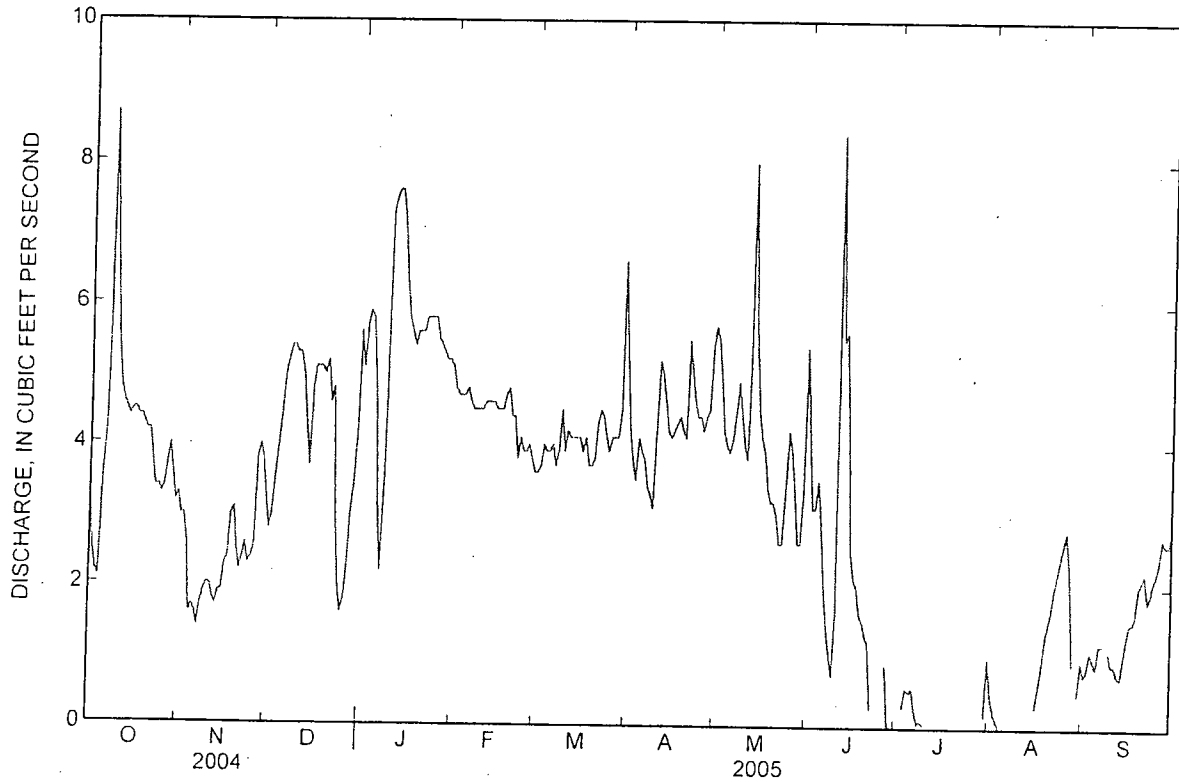
STATISTICS OF MONTHLY MEAN DATA FOR WATER YEARS 1941 - 2005, BY WATER YEAR (WY)

	Oct	Nov	Dec	Jan	Feb	Mar	Apr	May	Jun	Jul	Aug	Sep
Mean	6.45	7.60	7.81	8.03	8.56	8.83	8.70	7.45	5.34	2.50	2.34	4.02
Max	12.6	12.1	13.7	12.7	12.9	14.3	14.2	12.5	13.2	11.0	19.7	15.2
(WY)	(1943)	(1947)	(1946)	(1942)	(1960)	(1952)	(1944)	(1944)	(1962)	(1948)	(1950)	(1951)
Min	0.32	1.59	3.15	2.68	0.89	2.72	3.72	2.11	0.00	0.00	0.00	0.23
(WY)	(2004)	(2004)	(1999)	(1998)	(1998)	(1998)	(2000)	(1965)	(1994)	(1997)	(2000)	(1998)

SUMMARY STATISTICS

	Calendar Year 2004	Water Year 2005	Water Years 1941 - 2005	
Annual total	1,127.67	1,145.15		
Annual mean	3.08	3.14	6.45	
Highest annual mean			10.9	1951
Lowest annual mean			2.51	1998
Highest daily mean	8.7 Oct 8	8.7 Oct 8	90	Aug 11, 1950
Lowest daily mean	0.00 Aug 2	0.00 Jun 23	0.00	Aug 3, 1955
Annual seven-day minimum	0.00 Aug 2	0.00 Jul 11	0.00	Aug 14, 1973
Maximum peak flow		11a Jun 11	140b	Jun 27, 1948
Maximum peak stage		2.12c Jan 12	5.93c	Jan 3, 1976
Annual runoff (ac-ft)	2,240	2,270	4,680	
10 percent exceeds	4.8	5.4	11	
50 percent exceeds	3.5	3.5	7.0	
90 percent exceeds	0.05	0.00	0.20	

- a Stage 1.60 ft
- b Stage 4.37 ft, site and datum then in use
- c Backwater from ice





Water-Data Report NE-2005

06824000 ROCK CREEK AT PARKS, NE

KANSAS RIVER BASIN

LOCATION.--Lat 40°02'32", long 101°43'41", in SW ¼ NE ¼ sec.21, T.1 N., R.39 W., Dundy County, Hydrologic Unit 10250002, on right bank at west edge of Parks, 100 ft downstream from county road bridge and 0.5 mi upstream from mouth.

DRAINAGE AREA.--23.60 mi² of which 3.60 mi² probably is noncontributing.

WATER-DISCHARGE RECORDS

REVISED RECORDS.--WSP 1630: 1951(M). WDR NE-94-1: Drainage area.

PERIOD OF RECORD.--October 1940 to current year.

GAGE.--Water-stage recorder. Datum of gage is 3,093.35 ft above sea level. Data collection platform at station.

REMARKS.--Records fair except for estimated daily discharges and daily discharges for September, which are poor. One diversion about 2 mi above station for irrigation of 215 acres; flow regulated at times by reservoir at State fish hatchery 7 mi upstream.

06824000 ROCK CREEK AT PARKS, NE—Continued

DISCHARGE, CUBIC FEET PER SECOND
WATER YEAR OCTOBER 2004 TO SEPTEMBER 2005
DAILY MEAN VALUES
[e, estimated]

Day	Oct	Nov	Dec	Jan	Feb	Mar	Apr	May	Jun	Jul	Aug	Sep
1	8.1	6.7	11	10	9.0	8.4	8.7	8.8	8.1	5.7	4.6	5.8
2	8.1	6.4	9.1	9.9	8.8	8.9	7.9	8.6	7.5	5.6	4.8	5.8
3	8.1	6.2	9.1	9.7	8.5	9.1	7.5	8.2	7.9	5.8	4.9	5.8
4	8.1	6.4	9.4	9.0	8.2	8.9	7.3	8.1	9.2	6.1	5.0	5.7
5	8.1	6.6	9.9	10	7.9	8.7	7.3	7.9	7.8	7.0	5.0	5.7
6	8.6	6.8	10	e10	7.7	8.4	8.0	7.7	7.2	6.7	5.0	5.7
7	10	6.7	10	e11	7.5	7.9	7.3	7.6	6.8	6.4	5.7	5.9
8	8.4	6.8	10	e11	7.6	7.9	7.6	7.5	6.7	6.2	5.5	6.0
9	7.0	7.0	10	13	7.2	7.9	8.6	7.5	6.5	5.9	5.3	5.7
10	6.3	7.5	10	11	6.8	7.8	9.5	7.3	6.8	5.7	6.0	5.4
11	6.9	8.0	9.8	10	6.8	7.8	9.7	7.3	9.9	5.4	7.4	5.4
12	7.4	7.9	9.7	10	6.7	7.6	8.7	7.6	13	5.4	7.2	5.4
13	7.3	8.0	9.1	9.6	7.2	7.9	7.8	7.6	12	5.4	7.1	5.5
14	7.3	8.2	8.7	8.3	7.9	8.5	7.6	7.6	10	5.5	6.7	5.5
15	7.4	8.7	9.1	e9.6	7.7	8.2	7.7	7.4	8.3	5.4	6.2	5.7
16	7.5	8.8	9.3	e9.7	7.9	8.1	7.8	7.2	7.5	5.2	6.0	5.7
17	6.9	8.8	9.2	e9.7	7.7	7.9	7.8	7.2	7.0	5.0	6.6	5.6
18	6.9	10	9.3	e9.8	7.6	7.7	7.8	7.2	6.7	5.1	6.4	5.8
19	6.7	11	9.1	9.9	7.8	7.7	7.5	7.0	6.5	5.1	6.2	6.0
20	6.5	9.9	9.6	10	8.1	7.8	7.2	6.9	6.4	4.9	6.5	5.9
21	6.5	9.3	13	10	8.2	13	9.5	6.7	6.3	4.7	6.5	5.9
22	6.6	9.2	12	9.4	8.2	15	9.8	6.7	6.1	4.6	6.3	5.9
23	6.9	8.9	12	9.2	8.3	12	7.9	6.7	5.9	4.3	6.4	5.8
24	6.2	8.9	9.5	9.3	8.4	10	7.3	6.9	5.9	4.3	7.9	5.7
25	6.5	8.9	e9.8	9.3	8.4	9.8	6.8	7.8	6.3	4.8	7.3	5.9
26	6.7	8.8	e10	9.3	8.4	9.1	6.5	7.7	6.9	5.3	7.8	5.9
27	6.7	9.0	e10	9.2	8.3	8.8	5.8	7.4	6.6	5.3	7.4	5.8
28	6.5	9.2	e10	9.2	8.4	8.5	5.9	7.2	6.2	5.1	6.8	5.9
29	6.6	10	e10	9.2	---	8.7	7.6	7.2	5.9	4.7	6.6	6.3
30	6.6	9.8	e10	9.1	---	11	8.6	7.3	5.9	4.4	6.3	6.7
31	6.6	---	10	9.2	---	10	---	8.5	---	4.4	5.9	---
Total	224.0	248.4	307.7	303.6	221.2	279.0	235.0	232.3	223.8	165.4	193.3	173.8
Mean	7.23	8.28	9.93	9.79	7.90	9.00	7.83	7.49	7.46	5.34	6.24	5.79
Max	10	11	13	13	9.0	15	9.8	8.8	13	7.0	7.9	6.7
Min	6.2	6.2	8.7	8.3	6.7	7.6	5.8	6.7	5.9	4.3	4.6	5.4
Ac-ft	444	493	610	602	439	553	466	461	444	328	383	345

STATISTICS OF MONTHLY MEAN DATA FOR WATER YEARS 1941 - 2005, BY WATER YEAR (WY)

	Oct	Nov	Dec	Jan	Feb	Mar	Apr	May	Jun	Jul	Aug	Sep
Mean	12.0	12.9	12.9	13.0	13.2	13.3	13.2	13.1	12.6	11.4	11.0	11.2
Max	16.2	19.7	17.1	17.9	17.5	18.1	18.1	19.0	19.0	30.3	17.7	18.8
(WY)	(1966)	(1943)	(1941)	(1942)	(1949)	(1949)	(1949)	(1969)	(1965)	(1965)	(1950)	(1951)
Min	3.05	3.15	7.29	7.70	6.15	7.36	7.83	5.90	5.96	5.18	5.05	4.56
(WY)	(2004)	(2004)	(2004)	(2004)	(2003)	(2004)	(2005)	(2000)	(2001)	(2001)	(2003)	(2003)

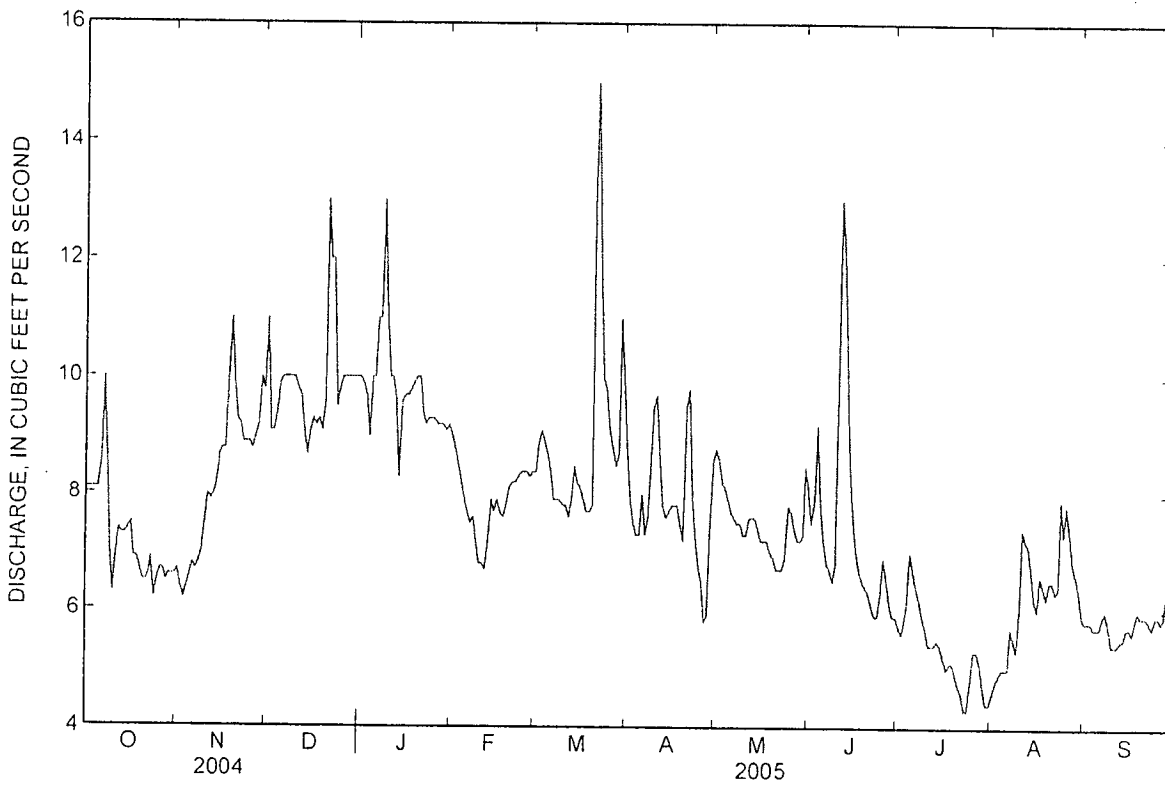
06824000 ROCK CREEK AT PARKS, NE—Continued

SUMMARY STATISTICS

	Calendar Year 2004	Water Year 2005	Water Years 1941 - 2005	
Annual total	2,769.8	2,807.5		
Annual mean	7.57	7.69	12.5	
Highest annual mean			15.8	1949
Lowest annual mean			6.57	2004
Highest daily mean	16 Jul 22	15 Mar 22	111	Jul 6, 1965
Lowest daily mean	4.5 Jun 14	4.3 Jul 23	0.63	Oct 26, 2003
Annual seven-day minimum	5.0 Aug 29	4.7 Jul 19	0.64	Oct 23, 2003
Maximum peak flow		16a May 21	493	Jul 5, 1965
Maximum peak stage		2.66b Dec 25	6.00	Jul 5, 1965
Annual runoff (ac-ft)	5,490	5,570	9,030	
10 percent exceeds	9.9	10	16	
50 percent exceeds	7.4	7.6	12	
90 percent exceeds	5.5	5.7	8.4	

a Stage 1.68 ft

b Backwater from ice





Water-Data Report NE-2005

06827500 SOUTH FORK REPUBLICAN RIVER NEAR BENKELMAN, NE

KANSAS RIVER BASIN

LOCATION.--Lat 40°00'37", long 101°32'31", in SE ¼ NW ¼ sec.31, T.1 N., R.37 W., Dundy County, Hydrologic Unit 10250003, 1 mi downstream from Kansas-Nebraska State line, 2.5 mi southwest of Benkelman, and 3.4 mi upstream from mouth.

DRAINAGE AREA.--2,740 mi² of which 550 mi² probably is noncontributing.

WATER-DISCHARGE RECORDS

REVISED RECORDS.--WSP 1310: 1904-6, 1931. WSP 1390: 1940, 1945, 1947. WSP 1919: 1951-52, 1954-56. WSP 2119: Drainage area. WDR NE-97: 1995 (M).

PERIOD OF RECORD.--October 1894 to September 1895, October 1902 to November 1906, October 1930 to September 1932, August 1937 to current year. Published as South Fork of Republican River at Benkelman prior to 1906 and as Republican River at Benkelman 1931-32. Monthly discharge only for some periods, published in WSP 1310.

GAGE.--Water-stage recorder. Datum of gage is 2,989.91 ft above sea level. Prior to Dec. 10, 1947, non-recording gages at several sites within 3.5 mi of present site at various datums. Dec.10, 1947 to Sept. 28, 1966 water-stage recorder 170 ft upstream at datum 3.00 ft higher and Sept. 29, 1966 to Mar. 7, 1968 at site 300 ft upstream at datum 3.00 ft higher. Mar. 8, 1968 to May 29, 1991 at site 300 ft upstream at datum 1.0 ft higher. May 30, 1991 to Sept. 30, 1998 at present site at datum 1.0 ft higher. Data collection platform at station.

REMARKS.--Records fair. Natural flow affected by irrigation development above station, and since July 6, 1950, by storage in Bonny Reservoir.

06827500 SOUTH FORK REPUBLICAN RIVER NEAR BENKELMAN, NE—Continued

DISCHARGE, CUBIC FEET PER SECOND
WATER YEAR OCTOBER 2004 TO SEPTEMBER 2005
DAILY MEAN VALUES
[e. estimated]

Day	Oct	Nov	Dec	Jan	Feb	Mar	Apr	May	Jun	Jul	Aug	Sep
1	0.00	0.00	0.00	0.00	0.00	0.00	0.00	0.00	0.00	0.00	0.00	0.00
2	0.00	0.00	0.00	0.00	0.00	0.00	0.00	0.00	0.00	0.00	0.00	0.00
3	0.00	0.00	0.00	0.00	0.00	0.00	0.00	0.00	0.00	0.00	0.00	0.00
4	0.00	0.00	0.00	0.00	0.00	0.00	0.00	0.00	0.00	0.00	0.00	0.00
5	0.00	0.00	0.00	0.00	0.00	0.00	0.00	0.00	0.00	0.00	0.00	0.00
6	0.00	0.00	0.00	0.00	0.00	0.00	0.00	0.00	0.00	0.00	0.00	0.00
7	0.00	0.00	0.00	0.00	0.00	0.00	0.00	0.00	0.00	0.00	0.00	0.00
8	0.00	0.00	0.00	0.00	0.00	0.00	0.00	0.00	0.00	0.00	0.00	0.00
9	0.00	0.00	0.00	0.00	0.00	0.00	0.00	0.00	0.00	0.00	e0.00	0.00
10	0.00	0.00	0.00	0.00	0.00	0.00	0.00	0.00	0.00	0.00	e0.00	0.00
11	0.00	0.00	0.00	0.00	0.00	0.00	0.00	0.00	0.00	0.00	e0.00	0.00
12	0.00	0.00	0.00	0.00	0.00	0.00	0.00	0.00	0.00	0.00	e0.00	0.00
13	0.00	0.00	0.00	0.00	0.00	0.00	0.00	0.00	0.00	0.00	e0.00	0.00
14	0.00	0.00	0.00	0.00	0.00	0.00	0.00	0.00	0.00	0.00	e0.00	0.00
15	0.00	0.00	0.00	0.00	0.00	0.00	0.00	0.00	0.00	0.00	e0.00	0.00
16	0.00	0.00	0.00	0.00	0.00	0.00	0.00	0.00	0.00	0.00	e0.00	0.00
17	0.00	0.00	0.00	0.00	0.00	0.00	0.00	0.00	0.00	0.00	0.00	0.00
18	0.00	0.00	0.00	0.00	0.00	0.00	0.00	0.00	0.00	0.00	0.00	0.00
19	0.00	0.00	0.00	0.00	0.00	0.00	0.00	0.00	0.00	0.00	0.00	0.00
20	0.00	0.00	0.00	0.00	0.00	0.00	0.00	0.00	0.00	0.00	0.00	0.00
21	0.00	0.00	0.00	0.00	0.00	0.00	0.00	0.00	0.00	0.00	0.00	0.00
22	0.00	0.00	0.00	0.00	0.00	0.00	0.00	0.00	0.00	0.00	0.00	0.00
23	0.00	0.00	0.00	0.00	0.00	0.00	0.00	0.00	0.00	0.00	0.00	0.00
24	0.00	0.00	0.00	0.00	0.00	0.00	0.00	0.00	0.00	0.00	0.00	0.00
25	0.00	0.00	0.00	0.00	0.00	0.00	0.00	0.00	0.00	0.00	0.00	0.00
26	0.00	0.00	0.00	0.00	0.00	0.00	0.00	0.00	0.00	0.00	0.00	0.00
27	0.00	0.00	0.00	0.00	0.00	0.00	0.00	0.00	0.00	0.00	0.00	0.00
28	0.00	0.00	0.00	0.00	0.00	0.00	0.00	0.00	0.00	0.00	0.00	0.00
29	0.00	0.00	0.00	0.00	---	0.00	0.00	0.00	0.00	0.00	0.00	0.00
30	0.00	0.00	0.00	0.00	---	0.00	0.00	0.00	0.00	0.00	0.00	0.00
31	0.00	---	0.00	0.00	---	0.00	---	0.00	---	0.00	0.00	---
Total	0.00	0.00	0.00	0.00	0.00	0.00	0.00	0.00	0.00	0.00	0.00	0.00
Mean	0.00	0.00	0.00	0.00	0.00	0.00	0.00	0.00	0.00	0.00	0.00	0.00
Max	0.00	0.00	0.00	0.00	0.00	0.00	0.00	0.00	0.00	0.00	0.00	0.00
Min	0.00	0.00	0.00	0.00	0.00	0.00	0.00	0.00	0.00	0.00	0.00	0.00
Ac-ft	0.00	0.00	0.00	0.00	0.00	0.00	0.00	0.00	0.00	0.00	0.00	0.00

STATISTICS OF MONTHLY MEAN DATA FOR WATER YEARS 1938 - 2005, BY WATER YEAR (WY)

	Oct	Nov	Dec	Jan	Feb	Mar	Apr	May	Jun	Jul	Aug	Sep
Mean	15.3	20.0	19.2	21.6	36.7	48.4	53.2	66.5	67.3	53.2	31.8	22.4
Max	160	113	77.0	77.5	121	227	158	396	455	616	383	335
(WY)	(1966)	(1970)	(1943)	(1943)	(1949)	(1942)	(1958)	(1957)	(1948)	(1946)	(1958)	(1951)
Min	0.00	0.00	0.00	0.00	0.00	0.00	0.00	0.00	0.00	0.00	0.00	0.00
(WY)	(1940)	(1953)	(1953)	(1977)	(2003)	(2004)	(2004)	(2004)	(2002)	(1943)	(1940)	(1939)

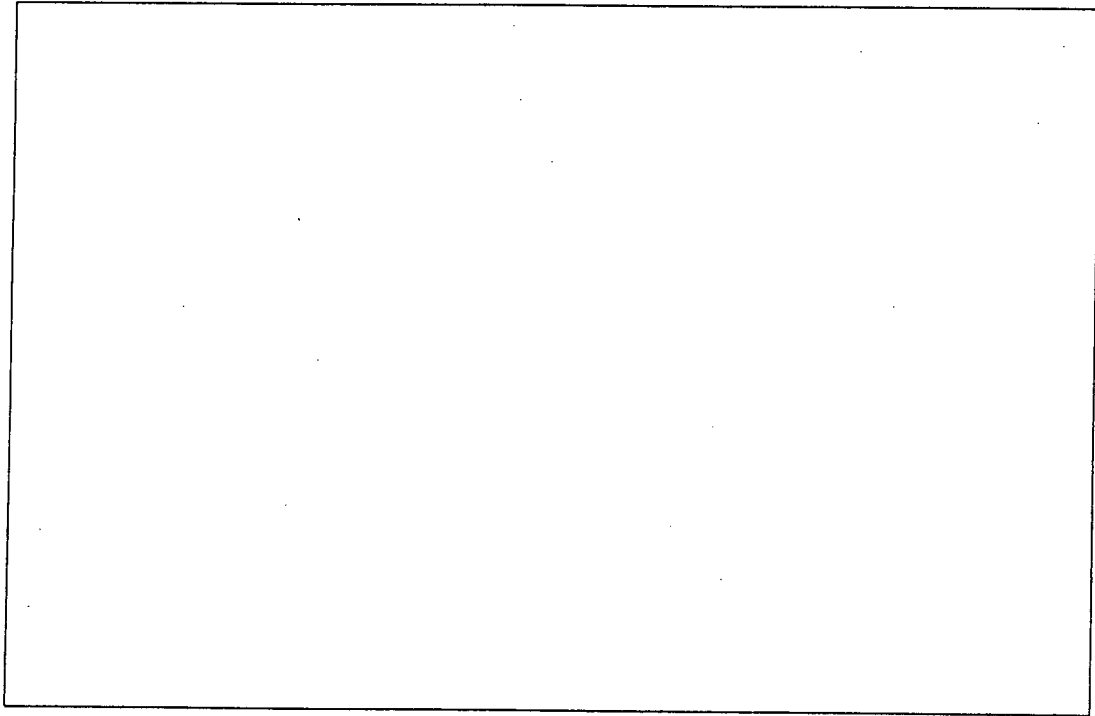
06827500 SOUTH FORK REPUBLICAN RIVER NEAR BENKELMAN, NE—Continued

SUMMARY STATISTICS

	Calendar Year 2004		Water Year 2005		Water Years 1938 - 2005	
Annual total	0.00		0.00			
Annual mean	0.00		0.00		38.0	
Highest annual mean					121	1951
Lowest annual mean					0.00	2004
Highest daily mean	0.00	Jan 1	0.00	Oct 1	6,220	Aug 16, 1958
Lowest daily mean	0.00	Jan 1	0.00	Oct 1	0.00	Jul 3, 1938
Annual seven-day minimum	0.00	Jan 1	0.00	Oct 1	0.00	Aug 1, 1938
Maximum peak flow			a		19,600	Aug 16, 1958
Maximum peak stage					8.70b	Aug 16, 1958
Annual runoff (ac-ft)	0.00		0.00		27,500	
10 percent exceeds	0.00		0.00		82	
50 percent exceeds	0.00		0.00		17	
90 percent exceeds	0.00		0.00		0.00	

a No flow all year

b May have been higher during flood of June 24, 1945, site and datum then in use





Water-Data Report NE-2005

06828500 REPUBLICAN RIVER AT STRATTON, NE

KANSAS RIVER BASIN

LOCATION.--Lat 40°08'26", long 101°13'47", in NW ¼ SW ¼ sec.13, T.2 N., R.35 W., Hitchcock County, Hydrologic Unit 10250004, on right bank at downstream side of county bridge, 0.5 mi south of Stratton, 0.2 mi downstream from Muddy Creek, 10 mi upstream from Trenton Dam, 19 mi downstream from South Fork Republican River, and at mile 387.

DRAINAGE AREA.--8,200 mi² of which 4,510 mi² probably is noncontributing.

WATER-DISCHARGE RECORDS

PERIOD OF RECORD.--July 1950 to current year.

REVISED RECORDS.--WDR NE-73: 1968-71(M), 1972. WDR NE-94-1: Drainage area.

GAGE.--Water-stage recorder and crest-stage gage. Datum of gage is 2,775.49 ft above sea level. Prior to Aug. 1, 1967, at site 0.3 mi downstream at present datum. Data collection platform at station.

REMARKS.--Records fair except for estimated daily discharges and daily discharges less than 7.0 ft³/s, which are poor. Natural flow affected by irrigation development above station and by storage in Bonny Reservoir (station 06826000).

06828500 REPUBLICAN RIVER AT STRATTON, NE—Continued

DISCHARGE, CUBIC FEET PER SECOND
WATER YEAR OCTOBER 2004 TO SEPTEMBER 2005
DAILY MEAN VALUES
[e, estimated]

Day	Oct	Nov	Dec	Jan	Feb	Mar	Apr	May	Jun	Jul	Aug	Sep
1	0.00	0.00	e0.00	e0.00	e48	37	51	30	30	3.4	0.00	0.00
2	0.00	0.00	e0.00	e0.00	e53	38	52	29	25	2.5	0.00	0.00
3	0.00	0.00	e0.00	e0.00	51	36	50	29	57	6.7	0.00	0.00
4	0.00	0.00	e0.00	e0.00	50	37	50	34	70	5.8	0.00	0.00
5	0.00	0.00	e0.00	e0.00	50	37	45	40	51	4.4	0.00	0.00
6	0.00	0.00	e0.00	e0.00	49	37	38	37	44	9.2	0.00	0.00
7	0.00	0.00	e0.00	e0.00	48	37	35	37	40	13	0.00	0.00
8	0.00	0.00	e0.00	e0.00	e48	37	36	31	31	18	0.00	0.00
9	0.00	0.00	e0.00	e0.00	e47	37	37	30	27	21	0.00	0.00
10	0.00	0.00	e0.00	e0.00	e47	37	39	28	28	10	0.00	0.00
11	0.00	0.00	e0.00	e0.00	e47	36	47	27	51	4.7	0.00	0.00
12	0.00	0.00	e0.00	e0.00	e48	37	44	24	48	0.83	0.00	0.00
13	0.00	0.00	e0.00	e0.00	e48	e37	40	23	57	0.26	0.00	0.00
14	0.00	0.00	e0.00	e0.00	e47	e38	39	25	56	0.00	0.00	0.00
15	0.00	0.00	e0.00	e0.00	46	38	39	31	52	0.00	0.00	0.00
16	0.00	0.00	e0.00	e4.0	42	38	37	33	56	0.00	0.00	0.00
17	0.00	0.00	e0.00	e8.0	43	39	40	28	47	0.00	0.00	0.00
18	0.00	0.00	e0.00	e16	41	38	47	21	38	0.00	0.00	0.00
19	0.00	0.00	e0.00	e16	44	36	47	16	32	0.00	0.00	0.00
20	0.00	0.00	e0.00	e16	44	37	42	13	26	0.00	0.00	0.00
21	0.00	0.00	e0.00	e16	43	56	54	9.6	24	0.00	0.00	0.00
22	0.00	0.00	e0.00	e16	41	56	51	6.8	19	0.00	0.00	0.00
23	0.00	0.00	e0.00	e17	41	56	45	5.4	15	0.00	0.00	0.00
24	0.00	0.00	e0.00	e20	40	53	41	9.0	14	0.00	0.00	0.00
25	0.00	0.00	e0.00	e23	39	48	40	18	11	0.00	0.00	0.00
26	0.00	0.00	e0.00	e26	39	46	35	12	9.3	0.00	0.00	0.00
27	0.00	0.00	e0.00	e29	39	45	31	14	9.7	0.00	0.00	0.00
28	0.00	0.00	e0.00	e32	38	46	30	19	9.9	0.00	0.00	0.00
29	0.00	0.00	e0.00	e35	---	48	31	21	7.1	0.00	0.00	0.00
30	0.00	0.00	e0.00	e38	---	53	31	20	5.2	0.00	0.00	0.00
31	0.00	---	e0.00	e44	---	51	---	33	---	0.00	0.00	---
Total	0.00	0.00	0.00	356.00	1,261	1,302	1,244	733.8	990.2	99.79	0.00	0.00
Mean	0.00	0.00	0.00	11.5	45.0	42.0	41.5	23.7	33.0	3.22	0.00	0.00
Max	0.00	0.00	0.00	44	53	56	54	40	70	21	0.00	0.00
Min	0.00	0.00	0.00	0.00	38	36	30	5.4	5.2	0.00	0.00	0.00
Ac-ft	0.00	0.00	0.00	706	2,500	2,580	2,470	1,460	1,960	198	0.00	0.00

STATISTICS OF MONTHLY MEAN DATA FOR WATER YEARS 1950 - 2005, BY WATER YEAR (WY)

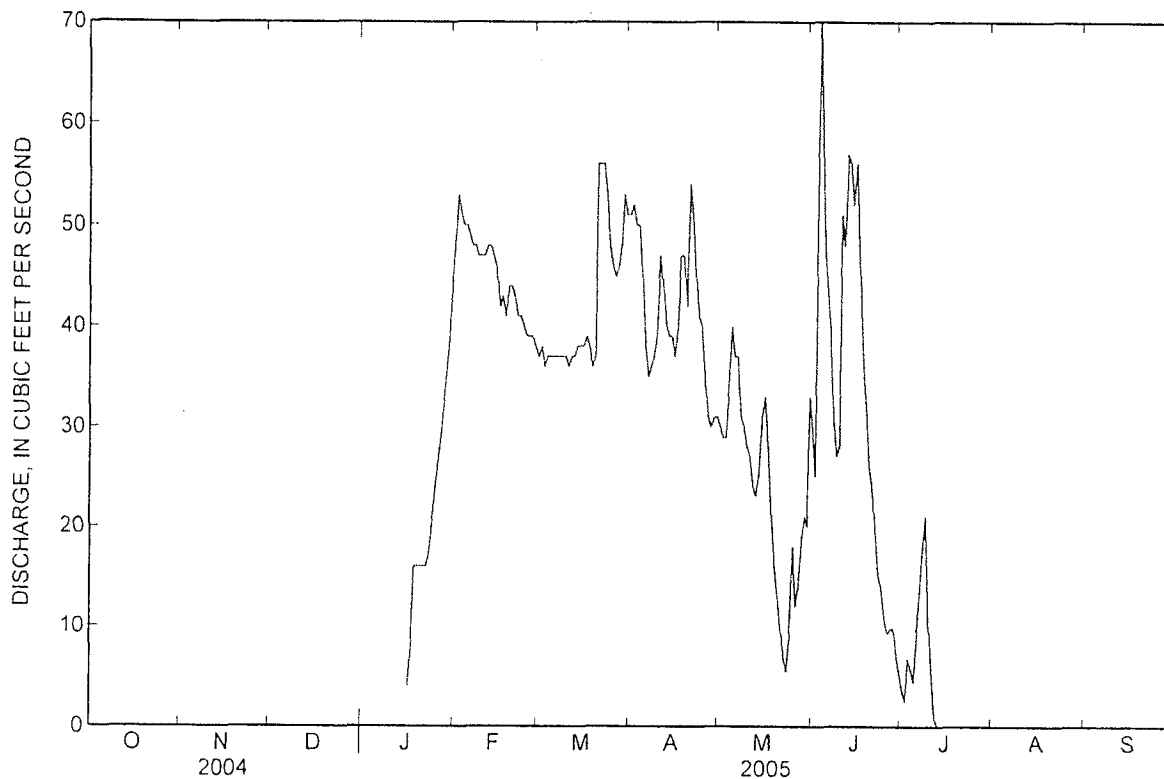
	Oct	Nov	Dec	Jan	Feb	Mar	Apr	May	Jun	Jul	Aug	Sep
Mean	44.1	82.2	83.1	94.1	134	168	159	160	131	79.7	59.9	47.7
Max	285	218	157	159	225	788	388	766	572	759	479	1,005
(WY)	(1966)	(1970)	(1966)	(1974)	(1963)	(1960)	(1980)	(1957)	(1951)	(1962)	(1950)	(1951)
Min	0.00	0.00	0.00	11.5	22.3	42.0	36.7	11.5	0.00	0.00	0.00	0.00
(WY)	(1977)	(2003)	(2004)	(2005)	(2003)	(2005)	(2004)	(2002)	(2000)	(1954)	(1952)	(1952)

06828500 REPUBLICAN RIVER AT STRATTON, NE—Continued

SUMMARY STATISTICS

	Calendar Year 2004		Water Year 2005		Water Years 1950 - 2005	
Annual total	4,437.85		5,986.79			
Annual mean	12.1		16.4		103	
Highest annual mean					304	1951
Lowest annual mean					12.1	2004
Highest daily mean	61	Mar 1	70	Jun 4	8,180	Aug 1, 1962
Lowest daily mean	0.00	Jan 1	0.00	Oct 1	0.00	Jun 18, 1952
Annual seven-day minimum	0.00	Jan 1	0.00	Oct 1	0.00	Jun 18, 1952
Maximum peak flow			80a	Jun 4	26,800b	Jul 31, 1962
Maximum peak stage			7.41c	Jan 24	9.34	Jul 31, 1962
Annual runoff (ac-ft)	8,800		11,870		74,270	
10 percent exceeds	42		47		209	
50 percent exceeds	0.00		0.00		75	
90 percent exceeds	0.00		0.00		0.00	

- a Stage 6.97 ft
- b Stage 9.34 ft, site then in use
- c Backwater from ice





Water-Data Report NE-2005

06834000 FRENCHMAN CREEK AT PALISADE, NE

KANSAS RIVER BASIN

LOCATION.--Lat 40°21'06", long 101°07'25", in SW ¼ SE ¼ sec.36, T.5 N., R.34 W., Hayes County, Hydrologic Unit 10250005, on right bank at upstream side of bridge on U.S. Highway 6, 0.7 mi west of Palisade, 1.5 mi upstream from Stinking Water Creek, and at mile 30.2.

DRAINAGE AREA.--1,300 mi², of which 190 mi² probably is noncontributing.

WATER-DISCHARGE RECORDS

PERIOD OF RECORD.--October 1894 to October 1896, June 1950 to current year. Published as Frenchman River at Palisade, October 1894 to October 1896 and October 1965 to September 1972.

REVISED RECORDS.--WDR NE-94-1: Drainage area.

GAGE.--Water-stage recorder. Datum of gage is 2,743.49 ft above sea level. October 1894 to October 1896, non-recording gage at railroad bridge 0.4 mi downstream at different datum; June 1950 to Feb. 7, 1977 recording gage at site 2,000 ft upstream at datum 4.0 ft higher.

COOPERATION.--Records provided by Nebraska Department of Natural Resources and reviewed by the U.S. Geological Survey.

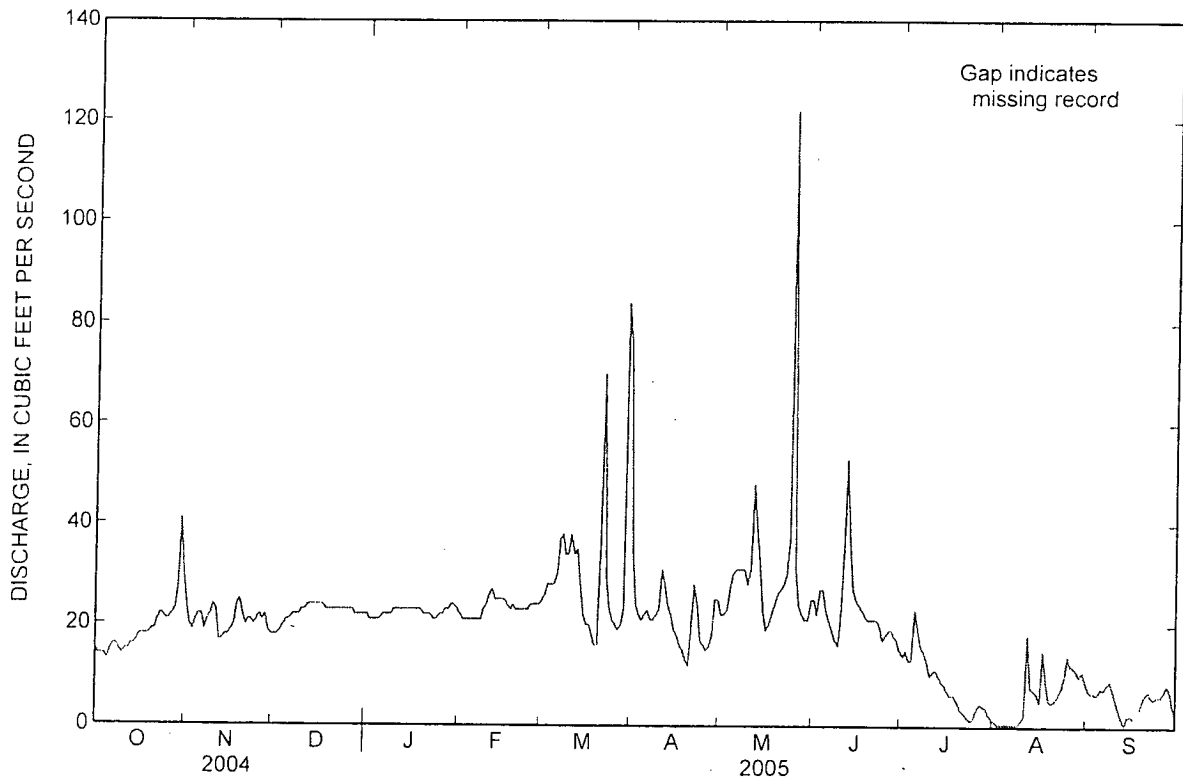
REMARKS.--Records good except for periods of estimated record, which are poor. Natural flow affected by irrigation development above station and, since Oct. 23, 1950, by storage in Enders Reservoir (station 06832000).

06834000 FRENCHMAN CREEK AT PALISADE, NE—Continued

DISCHARGE, CUBIC FEET PER SECOND
WATER YEAR OCTOBER 2004 TO SEPTEMBER 2005
DAILY MEAN VALUES
 [e, estimated]

Day	Oct	Nov	Dec	Jan	Feb	Mar	Apr	May	Jun	Jul	Aug	Sep
1	15	24	e18	e22	e22	25	34	22	25	14	1.2	7.3
2	14	20	e18	e21	e21	26	24	22	22	15	0.68	6.8
3	14	19	e19	e21	e21	28	22	23	27	13	0.55	6.7
4	14	21	e20	e21	e21	28	21	27	27	13	0.48	6.4
5	13	22	e21	e21	e21	28	22	30	23	23	0.51	7.6
6	15	22	e21	e22	e21	30	23	31	21	19	0.62	7.4
7	16	19	e22	e22	e21	37	21	31	19	16	0.43	8.3
8	16	21	e22	e22	e21	38	21	31	17	15	0.47	9.2
9	15	22	e22	e22	e23	34	22	31	16	13	0.58	7.3
10	14	24	e23	e23	e24	34	23	28	23	10	1.4	5.2
11	15	23	e23	e23	e26	38	31	31	36	11	2.3	3.1
12	15	17	e24	e23	e27	34	28	48	53	11	18	1.8
13	16	17	e24	e23	e25	35	24	39	36	10	7.6	0.40
14	16	18	e24	e23	e25	28	22	33	27	9.0	7.4	2.2
15	17	18	e24	e23	25	22	19	23	25	8.1	6.7	2.3
16	18	19	e24	e23	25	20	18	19	24	6.9	4.9	1.8
17	18	20	e24	e23	24	20	16	20	23	6.2	15	---
18	18	24	e23	e23	23	18	15	22	22	6.3	8.7	3.6
19	18	25	e23	e23	24	16	13	24	21	5.5	5.3	5.5
20	19	22	e23	e22	23	16	12	26	21	4.1	4.9	6.7
21	19	20	e23	e22	23	37	20	27	21	2.9	5.1	7.1
22	21	21	e23	e22	23	70	28	28	21	2.4	6.3	5.8
23	22	21	e23	e21	23	29	24	30	20	1.7	7.5	5.6
24	22	20	e23	e21	23	23	17	37	17	1.2	9.9	6.2
25	21	21	e23	e22	24	21	16	122	18	1.9	14	6.0
26	21	22	e23	e22	24	20	15	31	19	3.5	12	6.9
27	22	21	e23	e23	24	19	16	24	19	4.5	12	8.4
28	23	22	e22	e23	24	20	18	22	18	4.2	11	7.2
29	27	e19	e22	e24	---	23	25	21	17	3.8	10	3.9
30	41	e18	e22	e24	---	84	25	21	15	2.4	11	2.0
31	30	---	e22	e23	---	76	---	25	---	1.4	8.8	---
Total	585	622	691	693	651	977	635	949	693	259.0	195.32	---
Mean	18.9	20.7	22.3	22.4	23.2	31.5	21.2	30.6	23.1	8.35	6.30	---
Max	41	25	24	24	27	84	34	122	53	23	18	---
Min	13	17	18	21	21	16	12	19	15	1.2	0.43	---
Ac-ft	1,160	1,230	1,370	1,370	1,290	1,940	1,260	1,880	1,370	514	387	---

06834000 FRENCHMAN CREEK AT PALISADE, NE—Continued





Water-Data Report NE-2005

06835500 FRENCHMAN CREEK AT CULBERTSON, NE

KANSAS RIVER BASIN

LOCATION.--Lat 40°14'05", Long 100°52'40", in SW ¼ SE ¼ sec.12, T.3 N., R.32 W., Hitchcock County, Hydrologic Unit 10250005, on right bank 8 ft upstream from bridge on U.S. Highways 6 and 34, 2 mi west of Culbertson, and 4.0 mi upstream from mouth.

DRAINAGE AREA.--2,990 mi² of which 1,400 mi² probably is noncontributing.

WATER-DISCHARGE RECORDS

REVISED RECORDS.--WSP 1390: 1931, 1933, 1934(M), 1938(M). WDR NE-84-1: 1979, 1982(M). WDR NE-94-1: Drainage area.

PERIOD OF RECORD.--June 1913 to September 1915 (gage heights and discharge measurements only), October 1930 to current year. Published as Frenchman River at Culbertson October 1965 to September 1972. Monthly discharge only for some periods, published in WSP 1310.

GAGE.--Water-stage recorder. Datum of gage is 2,583.44 ft above sea level. See WSP 1919 for history of changes prior to Nov. 2, 1950. Data collection platform at station.

REMARKS.--Records good except for estimated daily discharges, which are poor. Natural flow affected by irrigation development above station and, since Oct. 23, 1950, by storage in Enders Reservoir (station 06832000). Principal diversion is by Culbertson Canal, 20,800 acres.

EXTREMES FOR PERIOD OF RECORD.--Maximum discharge, 15,000 ft³/s (estimated), May 31, 1935, gage height 14.80 ft, from floodmark.

06835500 FRENCHMAN CREEK AT CULBERTSON, NE—Continued

DISCHARGE, CUBIC FEET PER SECOND
 WATER YEAR OCTOBER 2004 TO SEPTEMBER 2005
 DAILY MEAN VALUES
 [e, estimated]

Day	Oct	Nov	Dec	Jan	Feb	Mar	Apr	May	Jun	Jul	Aug	Sep
1	14	33	37	45	53	50	42	36	14	41	2.8	9.5
2	15	32	40	44	53	49	43	37	14	23	2.5	9.1
3	16	33	41	42	51	49	41	39	34	19	2.3	8.7
4	17	34	45	44	51	49	39	38	44	17	2.2	7.7
5	18	34	43	39	52	48	36	38	29	45	1.6	5.4
6	19	35	45	31	52	49	33	42	24	21	1.4	1.8
7	21	35	47	28	51	49	32	42	21	16	1.4	2.0
8	20	36	46	38	51	48	35	39	14	12	1.0	1.9
9	21	37	46	39	50	48	38	39	11	9.9	0.83	1.2
10	22	38	44	41	47	48	39	38	15	8.5	4.5	9.3
11	22	38	44	43	53	48	40	37	16	11	1.4	8.3
12	23	38	44	40	52	50	40	30	18	16	1.9	7.9
13	23	38	44	42	52	49	39	29	23	15	1.5	8.3
14	23	38	42	39	51	49	38	28	42	17	1.2	1.4
15	24	40	43	e38	50	50	38	27	100	14	1.3	1.6
16	25	41	43	e38	50	50	34	26	101	13	1.3	1.8
17	26	41	43	e38	50	50	32	25	60	11	3.7	1.8
18	27	44	44	38	47	50	31	23	47	8.5	3.5	1.1
19	28	44	45	39	47	50	31	21	42	6.9	3.8	8.2
20	28	44	45	45	49	50	30	20	37	6.0	3.3	7.7
21	29	46	41	55	51	54	32	19	35	4.9	3.2	1.2
22	30	45	41	59	50	54	35	17	39	6.2	3.2	1.5
23	30	46	38	59	50	59	36	12	38	6.4	3.0	1.6
24	30	45	26	59	50	59	39	11	37	5.7	3.0	1.6
25	30	45	29	54	49	55	37	9.6	35	5.4	4.9	1.7
26	30	46	36	54	50	54	36	20	34	5.1	3.1	1.8
27	31	46	44	54	50	53	33	20	36	4.2	1.7	1.8
28	32	48	45	55	50	53	32	14	35	4.2	1.2	1.9
29	32	47	42	53	---	52	35	12	37	3.8	1.1	1.9
30	32	44	47	52	---	56	38	11	37	3.3	1.2	1.9
31	32	---	47	52	---	48	---	13	---	3.1	1.1	---
Total	770	1,211	1,307	1,397	1,412	1,580	1,084	812.6	1,069	383.1	154.73	453.7
Mean	24.8	40.4	42.2	45.1	50.4	51.0	36.1	26.2	35.6	12.4	4.99	15.1
Max	32	48	47	59	53	59	43	42	101	45	31	54
Min	14	32	26	28	47	48	30	9.6	11	3.1	0.83	7.7
Ac-ft	1,530	2,400	2,590	2,770	2,800	3,130	2,150	1,610	2,120	760	307	900

STATISTICS OF MONTHLY MEAN DATA FOR WATER YEARS 1951 - 2005, BY WATER YEAR (WY)

	Oct	Nov	Dec	Jan	Feb	Mar	Apr	May	Jun	Jul	Aug	Sep
Mean	66.1	77.3	76.5	77.7	94.6	106	74.4	61.6	72.1	45.8	35.3	52.3
Max	172	146	162	182	210	543	290	222	351	269	258	245
(WY)	(1963)	(1963)	(1959)	(1953)	(1952)	(1960)	(1960)	(1952)	(1967)	(1962)	(1962)	(1951)
Min	0.00	5.13	16.9	21.9	40.5	31.8	16.7	12.4	4.57	0.32	0.15	0.00
(WY)	(2003)	(2003)	(2003)	(2004)	(2004)	(2003)	(2004)	(2002)	(2000)	(2002)	(2003)	(2002)

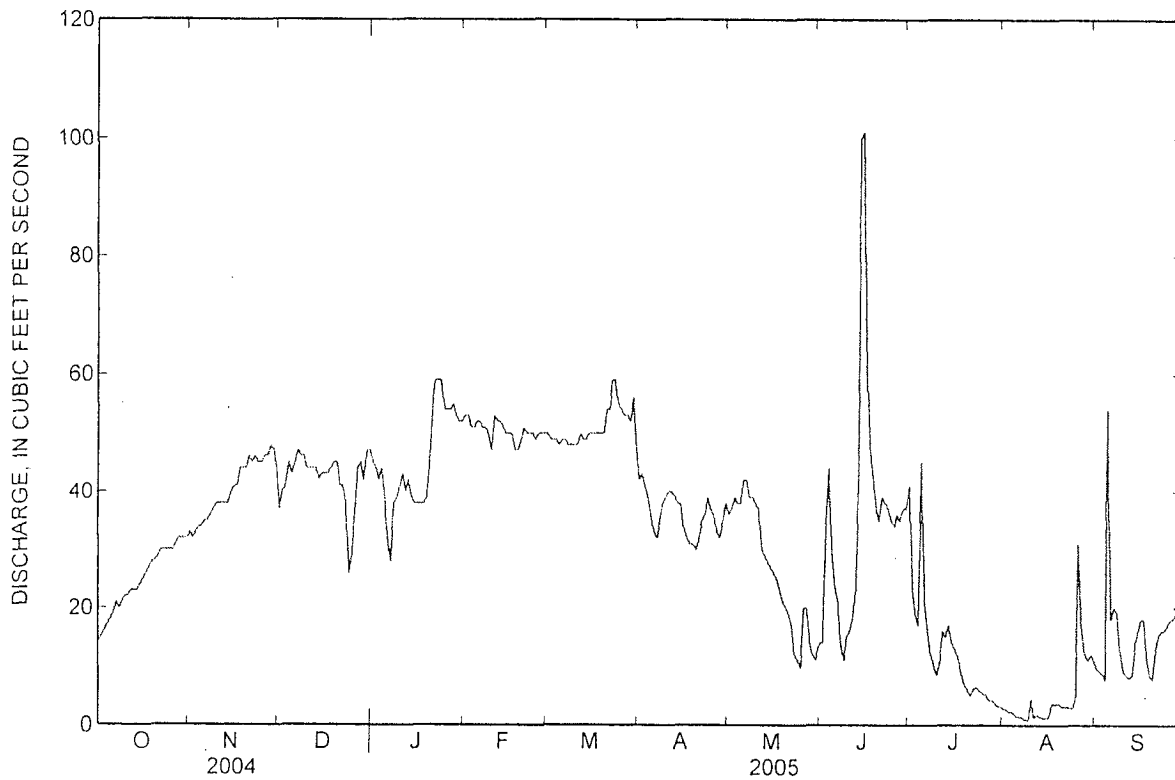
06835500 FRENCHMAN CREEK AT CULBERTSON, NE—Continued

SUMMARY STATISTICS

	Calendar Year 2004		Water Year 2005		Water Years 1951 - 2005	
Annual total	10,046.7		11,634.13			
Annual mean	27.4		31.9		69.8	
Highest annual mean					165	1960
Lowest annual mean					17.4	2003
Highest daily mean	197	Jul 12	101	Jun 16	3,060	Jun 18, 1956
Lowest daily mean	2.0	Sep 7	0.83	Aug 9	0.00	Aug 7, 1980
Annual seven-day minimum	2.5	Sep 1	1.5	Aug 3	0.00	Aug 18, 2000
Maximum peak flow			149a	Sep 5	5,260	Jun 17, 1951
Maximum peak stage			4.78b	Jun 15 Jun 16	10.43	Jun 17, 1951
Annual runoff (ac-ft)	19,930		23,080		50,570	
10 percent exceeds	47		51		126	
50 percent exceeds	22		36		59	
90 percent exceeds	8.8		6.3		13	

a Stage 4.25 ft.

b Backwater from debris.





Water-Data Report NE-2005

06836500 DRIFTWOOD CREEK NEAR MCCOOK, NE

KANSAS RIVER BASIN

LOCATION.--Lat 40°08'45", long 100°40'22", in SW ¼ SE ¼ sec. 11, T.2 N., R.30 W., Red Willow County, Hydrologic Unit 10250004, on right bank downstream from county road bridge, 5.8 mi upstream from mouth, and 3.5 mi southwest of McCook.

DRAINAGE AREA.--361 mi² of which 10 mi² probably is noncontributing.

WATER-DISCHARGE RECORDS

REVISED RECORDS.--WSP 1210: 1950. WDR NE-94-1: Drainage area.

PERIOD OF RECORD.--March 1946 to current year.

GAGE.--Water-stage recorder. Datum of gage is 2,502.78 ft above sea level. Prior to Oct. 12, 1962, at site 1.5 mi downstream in old channel at datum 9.00 ft lower, Oct. 12, 1962 to Apr. 11, 1963 at site 1.8 mi downstream at datum 12.75 ft lower, Apr. 12, 1963 to Apr. 22, 1982 at site 1.3 mi downstream at datum 9.00 ft lower, and Apr. 22, 1982 to May 29, 1992 at site 3.2 mi downstream at datum 17.55 ft lower. Data collection platform at station.

REMARKS.--Records fair. Natural flow affected by waste from Meeker-Driftwood Canal and by irrigation development above station.

06836500 DRIFTWOOD CREEK NEAR MCCOOK, NE—Continued

DISCHARGE, CUBIC FEET PER SECOND
WATER YEAR OCTOBER 2004 TO SEPTEMBER 2005
DAILY MEAN VALUES
[e, estimated]

Day	Oct	Nov	Dec	Jan	Feb	Mar	Apr	May	Jun	Jul	Aug	Sep
1	0.95	1.6	1.2	1.6	1.6	1.8	1.8	1.5	0.95	0.64	0.38	0.88
2	0.91	1.1	1.3	1.5	1.5	2.0	1.5	1.5	0.75	0.49	0.49	0.85
3	0.83	0.96	1.3	1.7	1.7	2.0	1.4	1.6	21	0.43	0.47	0.91
4	0.81	1.0	1.5	1.5	1.6	2.4	1.4	1.7	71	0.56	0.61	0.61
5	0.74	0.95	1.5	1.9	1.6	2.5	1.3	1.6	73	0.95	0.54	0.73
6	0.75	0.96	1.8	1.7	1.6	2.6	1.3	1.6	18	17	0.37	0.83
7	0.84	0.97	1.5	1.8	1.5	2.7	1.3	1.6	5.0	5.4	0.36	0.81
8	0.78	0.95	1.5	1.7	1.8	2.6	1.3	1.5	2.5	2.6	0.48	0.84
9	0.58	0.92	1.6	1.8	1.5	2.6	1.4	1.5	1.8	1.7	0.53	0.75
10	0.60	1.2	1.6	1.8	1.6	2.7	1.4	1.4	e1.7	0.95	0.32	0.82
11	0.61	1.2	1.6	1.8	1.6	2.7	1.7	1.4	e1.7	0.74	0.50	0.62
12	0.66	0.85	1.6	2.0	1.8	2.0	1.5	1.3	e1.7	0.67	0.84	0.71
13	0.77	0.73	2.0	1.7	1.9	2.0	1.4	1.2	e1.7	0.50	0.83	0.64
14	0.87	0.71	1.6	1.4	e1.7	2.0	1.4	1.2	e1.6	0.46	0.56	0.80
15	0.99	0.79	1.6	1.9	e1.5	1.6	1.4	1.1	1.5	0.44	0.47	0.92
16	1.0	0.82	1.5	2.2	e1.5	1.7	1.3	1.1	1.1	0.44	0.53	0.84
17	1.0	0.92	1.5	2.2	e1.5	1.8	1.4	1.2	1.1	0.38	164	0.77
18	1.1	1.2	1.5	2.4	1.5	1.9	1.4	0.86	1.3	0.40	121	0.96
19	1.2	1.6	1.2	2.5	1.6	1.8	1.4	0.93	1.0	0.61	9.5	1.1
20	1.2	1.2	1.6	2.5	1.6	1.7	1.4	0.78	1.1	0.71	6.5	1.0
21	1.3	0.86	1.5	2.4	1.6	2.9	1.4	0.68	1.00	0.83	3.0	0.94
22	1.3	0.94	1.4	1.9	1.4	3.4	1.5	0.46	0.96	0.61	2.0	0.94
23	1.3	0.94	1.5	1.8	1.5	1.9	1.3	0.57	0.86	0.43	1.3	1.1
24	1.3	1.1	1.6	2.0	1.1	1.6	1.4	1.0	0.89	0.37	1.2	1.4
25	1.3	0.95	1.8	2.0	1.5	1.5	1.5	0.88	0.86	0.36	1.2	1.8
26	1.3	1.1	1.9	1.9	1.6	1.5	1.5	0.65	1.00	0.60	2.1	1.6
27	1.3	1.2	1.9	1.8	1.7	1.5	1.4	0.55	1.3	0.49	1.7	1.2
28	1.3	1.2	1.9	1.8	1.8	1.5	1.6	0.55	0.94	0.43	1.2	1.0
29	1.3	1.3	1.7	1.8	---	1.6	1.7	0.55	0.72	0.37	0.98	0.91
30	1.3	1.2	1.8	1.7	---	7.0	1.5	0.72	0.50	0.36	1.1	0.92
31	1.1	---	1.6	1.8	---	2.6	---	1.2	---	0.42	0.97	---
Total	31.29	31.42	49.1	58.5	44.4	70.1	43.2	34.38	218.53	41.34	326.03	28.20
Mean	1.01	1.05	1.58	1.89	1.59	2.26	1.44	1.11	7.28	1.33	10.5	0.94
Max	1.3	1.6	2.0	2.5	1.9	7.0	1.8	1.7	73	17	164	1.8
Min	0.58	0.71	1.2	1.4	1.1	1.5	1.3	0.46	0.50	0.36	0.32	0.61
Ac-ft	62	62	97	116	88	139	86	68	433	82	647	56

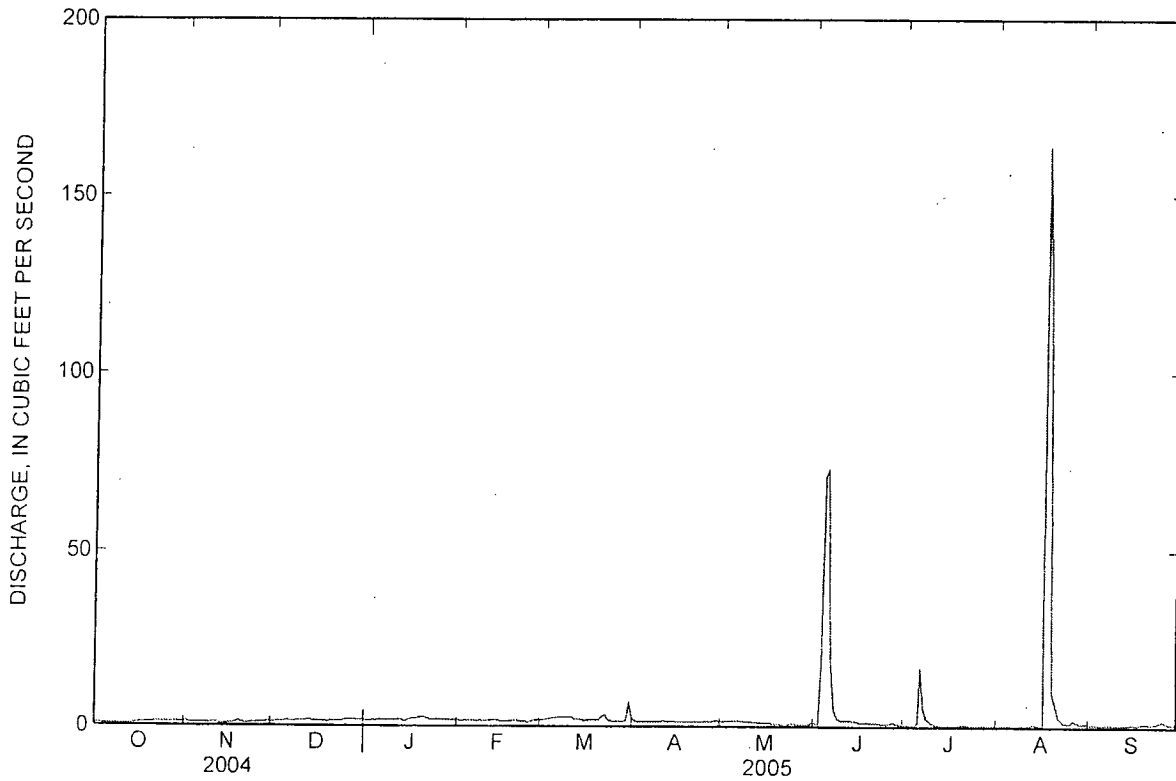
STATISTICS OF MONTHLY MEAN DATA FOR WATER YEARS 1946 - 2005, BY WATER YEAR (WY)

	Oct	Nov	Dec	Jan	Feb	Mar	Apr	May	Jun	Jul	Aug	Sep
Mean	6.70	3.56	3.47	3.45	5.44	7.42	4.14	9.08	16.5	18.7	15.7	12.4
Max	137	7.71	7.44	7.96	31.4	209	13.3	112	85.8	100	156	302
(WY)	(1947)	(1998)	(1974)	(1974)	(1960)	(1960)	(1977)	(1957)	(1947)	(1956)	(1950)	(1951)
Min	0.07	0.08	0.08	0.05	0.05	0.04	0.20	0.19	0.23	0.05	0.05	0.04
(WY)	(1956)	(1956)	(1955)	(1955)	(1956)	(1956)	(1948)	(1956)	(1954)	(1955)	(1946)	(1953)

06836500 DRIFTWOOD CREEK NEAR MCCOOK, NE—Continued

SUMMARY STATISTICS

	Calendar Year 2004	Water Year 2005	Water Years 1946 - 2005
Annual total	605.95	976.49	
Annual mean	1.66	2.68	8.91
Highest annual mean			35.0 1951
Lowest annual mean			1.12 1953
Highest daily mean	72 Jul 10	164 Aug 17	3,950 Aug 7, 1950
Lowest daily mean	0.10 Sep 13	0.32 Aug 10	0.00 Apr 25, 1946
Annual seven-day minimum	0.17 Aug 29	0.42 Jul 28	0.00 Jun 12, 1946
Maximum peak flow		384 Aug 17	4,740 Aug 7, 1950
Maximum peak stage		12.05 Aug 17	25.43 Aug 7, 1950
Annual runoff (ac-ft)	1,200	1,940	6,450
10 percent exceeds	1.7	2.0	11
50 percent exceeds	1.2	1.3	4.5
90 percent exceeds	0.47	0.58	0.30





Water-Data Report NE-2005

06837000 REPUBLICAN RIVER AT MCCOOK, NE

KANSAS RIVER BASIN

LOCATION.--Lat 40°11'16", long 100°37'07", in SW ¼ NE ¼ sec.32, T.3 N., R.29 W., Red Willow County, Hydrologic Unit 10250004, on left bank at downstream side of bridge on U.S. Highway 83 at south edge of McCook, 2.5 mi downstream from Driftwood Creek, 10.5 mi upstream from Red Willow Creek, and at mile 348.

DRAINAGE AREA.--12,240 mi² of which 6,020 mi² probably is noncontributing.

WATER-DISCHARGE RECORDS

REVISED RECORDS.--WDR NE-94-1: Drainage area.

PERIOD OF RECORD.--October 1930 to June 1932, October 1954 to current year Monthly discharge only for some periods, published in WSP 1310.

GAGE.--Water-stage recorder. Datum of gage is 2,456.37 ft above sea level. October 1930 to June 1932, non-recording gage on former highway bridge 300 ft upstream at different datum, and October 1954 to Mar. 13, 1959 on highway bridge 25 ft upstream at present datum. Mar. 13, 1959 to Mar. 29, 1988 at present site and datum. Mar. 29, 1988 to Oct. 31, 1989 200 ft downstream at present datum. Data collection platform at station.

REMARKS.--Records fair, except for estimated daily discharges, and records for July through September, which are poor. Natural flow affected by irrigation development above station and by storage in Bonny Reservoir, Enders Reservoir (station 06832000), and Swanson Lake (station 06829000).

06837000 REPUBLICAN RIVER AT MCCOOK, NE—Continued

DISCHARGE, CUBIC FEET PER SECOND
WATER YEAR OCTOBER 2004 TO SEPTEMBER 2005
DAILY MEAN VALUES

[e, estimated]

Day	Oct	Nov	Dec	Jan	Feb	Mar	Apr	May	Jun	Jul	Aug	Sep
1	0.84	18	e36	50	61	58	77	50	41	44	0.03	1.7
2	0.90	19	e34	46	60	59	67	49	36	39	0.02	1.2
3	1.2	15	e34	47	59	59	64	49	293	37	0.02	0.64
4	1.2	19	e36	e44	59	60	61	49	461	34	0.03	0.18
5	1.4	20	37	e44	60	59	60	50	196	32	0.02	0.08
6	4.1	20	43	e45	60	60	58	50	140	56	0.00	4.2
7	8.4	20	41	e45	57	60	57	51	89	50	0.02	5.3
8	5.5	21	42	e46	e55	59	57	49	65	35	0.02	5.2
9	5.5	22	45	47	e55	58	57	47	55	30	0.01	2.9
10	6.3	27	44	47	55	59	59	46	53	25	0.03	0.51
11	8.6	29	45	e46	56	58	65	45	52	27	0.04	0.02
12	11	24	45	48	61	58	61	44	48	28	1.5	0.01
13	11	24	e43	e44	65	57	59	45	81	22	0.04	0.02
14	7.5	24	e43	e40	62	56	60	44	69	21	0.03	0.02
15	9.8	25	43	e38	59	56	59	43	63	20	0.01	0.01
16	10	27	44	e34	60	56	58	42	96	18	0.01	0.01
17	11	28	44	e30	60	57	57	41	116	16	13	0.01
18	12	46	46	32	62	57	57	39	98	16	377	0.02
19	13	44	45	37	62	56	57	35	81	14	38	0.01
20	14	38	45	51	63	56	56	34	79	10	15	0.01
21	14	35	44	56	62	81	56	32	79	11	6.4	0.01
22	15	36	e42	51	62	95	55	30	81	8.5	2.5	0.01
23	15	35	e38	54	61	75	54	31	70	4.4	0.88	0.01
24	15	36	e36	57	60	72	55	34	74	2.9	2.4	0.09
25	15	36	e38	68	61	65	57	30	80	5.5	2.0	0.90
26	16	38	41	71	61	60	56	24	80	4.8	8.9	1.6
27	16	37	41	66	61	59	53	40	65	1.0	12	2.0
28	17	39	45	65	59	59	54	46	67	0.38	9.4	1.9
29	18	e38	47	65	---	63	53	41	66	0.04	7.4	2.4
30	18	e38	51	68	---	154	50	35	46	0.01	3.3	2.7
31	18	---	51	64	---	112	---	49	---	0.02	1.9	---
Total	320.24	878	1,309	1,546	1,678	2,053	1,749	1,294	2,920	612.55	501.91	33.67
Mean	10.3	29.3	42.2	49.9	59.9	66.2	58.3	41.7	97.3	19.8	16.2	1.12
Max	18	46	51	71	65	154	77	51	461	56	377	5.3
Min	0.84	15	34	30	55	56	50	24	36	0.01	0.00	0.01
Ac-ft	635	1,740	2,600	3,070	3,330	4,070	3,470	2,570	5,790	1,210	996	67

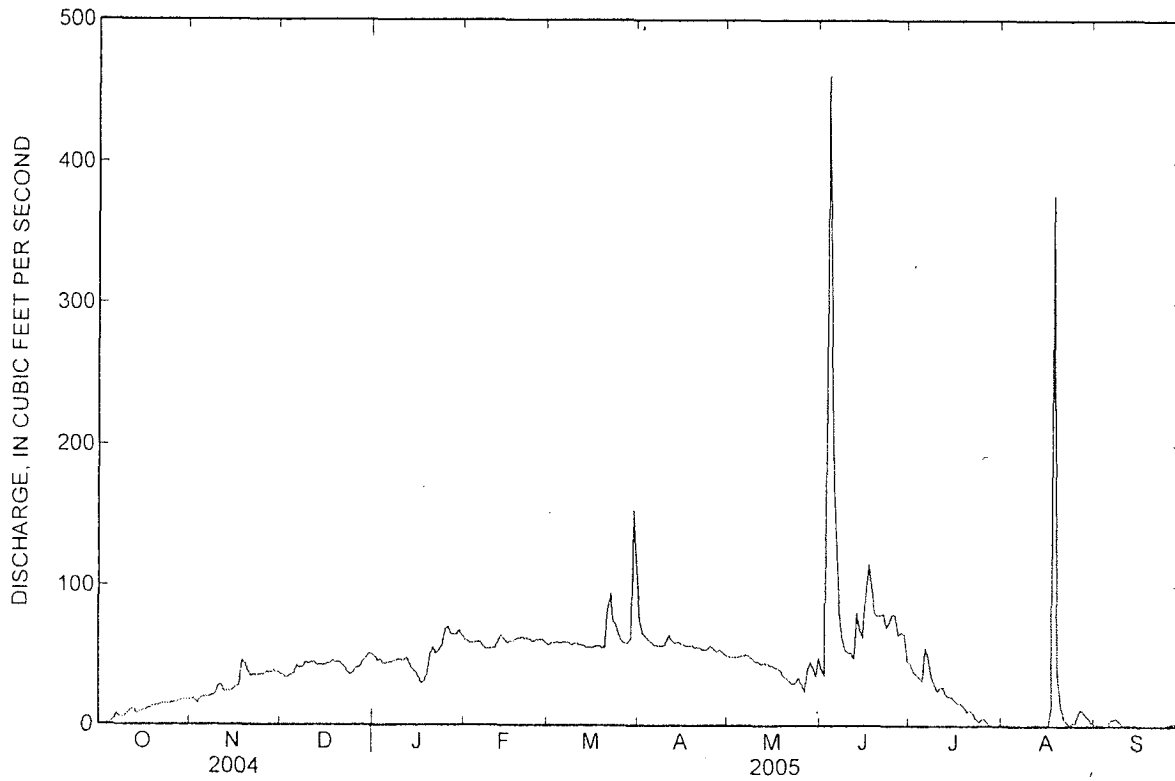
STATISTICS OF MONTHLY MEAN DATA FOR WATER YEARS 1955 - 2005, BY WATER YEAR (WY)

	Oct	Nov	Dec	Jan	Feb	Mar	Apr	May	Jun	Jul	Aug	Sep
Mean	89.7	102	99.7	104	140	166	149	159	174	195	158	89.0
Max	466	341	321	269	398	901	577	1,022	1,070	1,142	970	286
(WY)	(1966)	(1966)	(1959)	(1959)	(1958)	(1960)	(1958)	(1957)	(1962)	(1962)	(1962)	(1962)
Min	0.04	0.03	0.28	9.17	36.6	33.8	21.8	14.8	6.41	1.77	1.22	0.17
(WY)	(2004)	(2004)	(2003)	(2003)	(2003)	(2003)	(2004)	(2004)	(2002)	(2002)	(2003)	(2003)

06837000 REPUBLICAN RIVER AT MCCOOK, NE—Continued

SUMMARY STATISTICS

	Calendar Year 2004		Water Year 2005		Water Years 1955 - 2005	
Annual total	9,429.94		14,895.37			
Annual mean	25.8		40.8		135	
Highest annual mean					383	1962
Lowest annual mean					15.0	2003
Highest daily mean	170	Jul 11	461	Jun 4	5,020	Mar 21, 1960
Lowest daily mean	0.00	Jan 6	0.00	Aug 6	0.00	Sep 24, 2000
Annual seven-day minimum	0.00	Sep 6	0.01	Sep 15	0.00	Aug 29, 2001
Maximum peak flow			774	Aug 18	5,890	Mar 21, 1960
Maximum peak stage			7.05	Aug 18	9.14	Mar 21, 1960
Annual runoff (ac-ft)	18,700		29,540		98,100	
10 percent exceeds	51		65		242	
50 percent exceeds	21		43		100	
90 percent exceeds	1.1		0.59		40	





Water-Data Report NE-2005

06838000 RED WILLOW CREEK NEAR RED WILLOW, NE

KANSAS RIVER BASIN

LOCATION --Lat 40°14'05", long 100°30'03", in NE ¼ NE ¼ sec.17, T.3 N., R.28 W., Red Willow County, Hydrologic Unit 10250007, on left bank near downstream side of bridge on U.S. Highways 6 and 34, 0.8 mi north of Red Willow and 2.1 mi upstream from mouth.

DRAINAGE AREA --820 mi² of which 415 mi² probably is noncontributing.

WATER-DISCHARGE RECORDS

REVISED RECORDS.--WSP 1510: 1945(M), WDR NE-94-1: Drainage area.

PERIOD OF RECORD --September 1939 to current year.

GAGE --Water-stage recorder. Datum of gage is 2,398.64 ft above sea level. Prior to May 26, 1945, non-recording gage at bridge 1.2 mi upstream at datum 11.16 ft higher; May 26, 1945 to Aug. 2, 1974 water-stage recorder at left downstream side of bridge, present datum; Aug. 3, 1974 to June 27, 1980 on right bank at downstream side of bridge, present datum; and June 28, 1980 to May 19, 1992 at left downstream side of bridge, present datum. Data collection platform at station.

REMARKS.--Records good except for estimated daily discharges, which are poor. Natural flow affected by irrigation development above station, since Sept. 5, 1961, by storage in Hugh Butler Lake (station 06837390), and since June 1963 by Red Willow Canal which diverts 4.5 mi above station for irrigation of about 4,150 acres.

06838000 RED WILLOW CREEK NEAR RED WILLOW, NE—Continued

DISCHARGE, CUBIC FEET PER SECOND
WATER YEAR OCTOBER 2004 TO SEPTEMBER 2005
DAILY MEAN VALUES

[e, estimated]

Day	Oct	Nov	Dec	Jan	Feb	Mar	Apr	May	Jun	Jul	Aug	Sep
1	3.7	e6.0	5.7	5.7	7.2	6.1	7.2	6.6	6.1	7.0	0.00	4.0
2	3.7	e6.1	6.2	5.2	6.8	6.0	7.0	6.6	5.4	7.1	0.00	4.1
3	4.0	e6.0	5.9	5.8	6.7	6.0	6.8	6.6	12	7.2	0.15	4.0
4	3.9	6.3	5.9	e5.4	6.6	6.0	6.8	6.4	12	8.2	0.53	3.9
5	3.9	5.9	6.3	e5.0	6.5	6.3	6.8	6.3	7.3	e7.5	0.45	4.1
6	4.2	5.8	6.3	4.5	6.5	6.6	6.7	6.2	6.1	e7.5	0.72	4.2
7	4.8	5.9	6.2	e4.5	6.5	6.2	6.7	6.1	6.1	e7.4	0.75	4.7
8	4.6	5.9	6.1	e4.5	e5.5	6.2	6.8	6.0	5.7	e7.2	1.3	4.3
9	4.3	5.7	6.0	e4.5	4.4	6.2	7.2	5.8	6.3	e7.0	1.1	4.2
10	4.4	5.8	5.9	e4.7	7.7	6.2	7.1	5.8	6.5	e6.8	1.3	4.0
11	4.6	5.8	5.7	e4.8	7.8	6.1	7.0	5.9	6.5	e6.6	1.8	3.9
12	4.9	5.7	5.7	e4.9	7.1	6.2	7.0	6.0	6.7	e6.4	1.5	4.0
13	4.7	5.7	6.4	e4.9	6.7	6.2	6.9	6.0	6.8	e6.0	3.2	3.9
14	4.6	5.7	e5.9	e4.9	6.5	6.3	7.0	5.6	6.4	e5.5	2.4	3.4
15	5.0	5.7	6.3	e4.9	6.6	6.3	7.0	5.6	5.9	e5.0	2.5	3.7
16	5.1	5.7	6.3	e4.7	6.2	6.3	6.8	5.5	5.9	e4.0	2.4	4.0
17	4.9	5.6	6.1	e4.6	5.8	6.2	6.8	5.6	6.4	e3.0	3.5	4.3
18	4.9	6.5	5.9	e4.6	6.1	6.3	6.7	5.6	6.0	e2.4	5.2	4.0
19	4.9	6.6	6.2	e4.6	5.8	6.5	6.6	5.6	6.1	e1.8	3.3	4.2
20	4.7	6.0	e5.6	e4.7	5.9	6.8	6.7	5.4	5.9	e1.2	3.3	4.0
21	4.8	5.8	6.7	e5.1	5.8	7.6	7.1	5.5	5.8	1.1	3.4	3.9
22	5.0	5.8	e6.0	e5.6	5.8	8.2	7.1	5.4	6.2	1.0	4.7	3.8
23	5.1	5.9	e5.2	6.2	5.8	7.3	7.0	5.4	5.6	0.81	4.3	3.7
24	5.2	5.8	e4.4	12	5.8	7.1	6.9	5.4	5.7	0.71	4.3	3.9
25	5.2	5.8	e4.4	8.8	5.8	7.0	6.9	5.9	8.0	0.57	4.2	4.0
26	5.1	5.8	e5.0	8.0	5.9	7.0	6.7	5.9	7.2	1.3	5.2	4.0
27	5.2	5.8	e5.7	7.3	6.0	7.0	6.6	5.8	6.9	1.5	5.3	3.9
28	e5.2	6.1	6.3	7.4	6.0	7.0	6.8	5.7	6.6	1.9	4.2	3.9
29	e5.2	e5.9	6.0	7.3	---	7.1	6.8	5.6	6.5	0.99	5.3	3.9
30	e5.5	e5.8	6.3	7.2	---	23	6.7	5.7	6.4	0.09	5.0	4.1
31	e5.7	---	6.0	7.2	---	8.5	---	6.4	---	0.00	4.1	---
Total	147.0	176.9	182.6	179.5	175.8	221.8	206.2	181.9	201.0	124.77	85.40	120.0
Mean	4.74	5.90	5.89	5.79	6.28	7.15	6.87	5.87	6.70	4.02	2.75	4.00
Max	5.7	6.6	6.7	12	7.8	23	7.2	6.6	12	8.2	5.3	4.7
Min	3.7	5.6	4.4	4.5	4.4	6.0	6.6	5.4	5.4	0.00	0.00	3.4
Ac-ft	292	351	362	356	349	440	409	361	399	247	169	238

STATISTICS OF MONTHLY MEAN DATA FOR WATER YEARS 1962 - 2005, BY WATER YEAR (WY)

	Oct	Nov	Dec	Jan	Feb	Mar	Apr	May	Jun	Jul	Aug	Sep
Mean	8.28	8.38	8.49	9.07	10.5	11.1	11.1	11.6	20.2	21.4	20.5	9.95
Max	18.8	13.6	12.1	21.1	32.9	35.5	41.5	36.6	124	67.2	92.4	29.0
(WY)	(1970)	(1997)	(1966)	(1962)	(1968)	(1994)	(1970)	(1973)	(1967)	(2002)	(1978)	(1978)
Min	3.84	4.98	4.75	3.53	4.32	6.11	4.98	2.87	4.47	3.13	1.66	2.78
(WY)	(1978)	(1978)	(2003)	(2004)	(2004)	(2002)	(1978)	(1978)	(2004)	(2003)	(2003)	(2003)

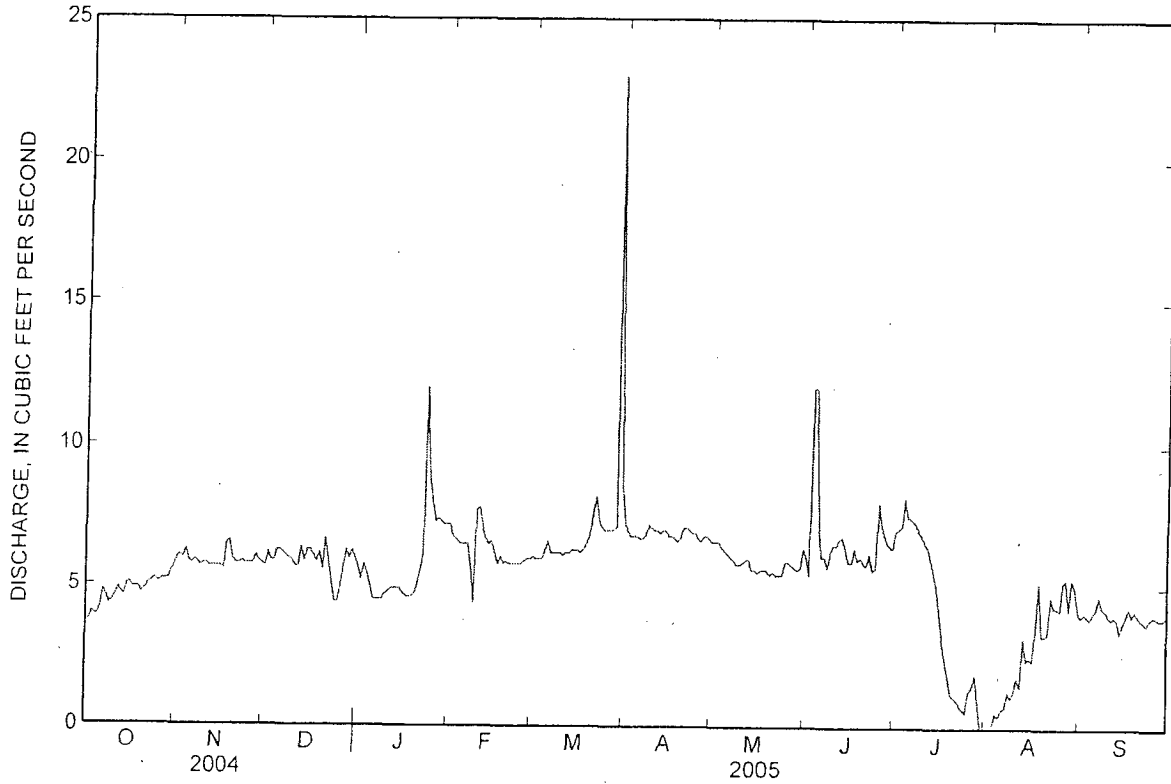
06838000 RED WILLOW CREEK NEAR RED WILLOW, NE—Continued

SUMMARY STATISTICS

	Calendar Year 2004		Water Year 2005		Water Years 1962 - 2005	
Annual total	1,794.5		2,002.87			
Annual mean	4.90		5.49		12.6	
Highest annual mean					25.5	1967
Lowest annual mean					4.75	2004
Highest daily mean	22	Jul 10	23	Mar 30	668	Jul 18, 1962
Lowest daily mean	1.1	Sep 4	0.00	Jul 31	0.00	Sep 2, 1995
Annual seven-day minimum	1.6	Sep 3	0.17	Jul 30	0.17	Jul 30, 2005
Maximum peak flow			39a	Mar 30	30,000	Jun 22, 1947
Maximum peak stage			8.54b	Jan 17	18.36	Jun 22, 1947
Annual runoff (ac-ft)	3,560		3,970		9,100	
10 percent exceeds	7.1		7.0		20	
50 percent exceeds	5.1		5.8		9.0	
90 percent exceeds	2.6		3.6		5.0	

a Stage 5.33 ft

b Backwater from ice





Water Data Report NE-2005

06843500 REPUBLICAN RIVER AT CAMBRIDGE, NE

KANSAS RIVER BASIN

LOCATION.--Lat 40°17'04", long 100°08'37", in NW ¼ SE ¼ sec.28, T.4 N., R.25 W., Furnas County, Hydrologic Unit 10250004, on left bank 400 ft south of U.S. Highways 6 and 34, 0.5 mi downstream from Medicine Creek, 1 mi east of Cambridge, 1.3 mi upstream from Cambridge diversion dam, and at mile 315.

DRAINAGE AREA.--14,460 mi², of which 6,680 mi² probably is noncontributing.

WATER-DISCHARGE RECORDS

PERIOD OF RECORD.--September 1945 to current year.

REVISED RECORDS.--WDR NE-84-1: 1983(M). WDR NE-94-1: Drainage area.

GAGE.--Water-stage recorder. Datum of gage is 2,239.07 ft above sea level. Prior to July 13, 1948, non-recording gage at site 150 ft upstream at same datum and July 13, 1948 to Sept. 25, 1950 at present site and datum.

COOPERATION.--Records provided by Nebraska Department of Natural Resources and reviewed by the U.S. Geological Survey.

REMARKS.--Records good. Natural flow affected by irrigation development above station and since 1949 by regulation from upstream reservoirs.

EXTREMES FOR PERIOD OF RECORD.--Maximum discharge, 160,000 ft³/s June 22, 1947, gage height 16.7 ft, from flood marks.

EXTREMES OUTSIDE PERIOD OF RECORD.--Maximum stage since at least 1826, 17.6 ft May 31 to June 1, 1935, information from local resident, discharge, about 280,000 ft³/s.

06843500 REPUBLICAN RIVER AT CAMBRIDGE, NE—Continued

DISCHARGE, CUBIC FEET PER SECOND
WATER YEAR OCTOBER 2004 TO SEPTEMBER 2005
DAILY MEAN VALUES

[e, estimated]

Day	Oct	Nov	Dec	Jan	Feb	Mar	Apr	May	Jun	Jul	Aug	Sep
1	e0.00	e0.00	18	46	86	63	129	57	34	180	152	9.6
2	e0.00	e0.00	18	42	83	62	108	55	39	175	183	e2.0
3	e0.00	e0.00	22	40	76	62	99	56	62	183	206	e1.0
4	e0.00	e0.00	22	36	67	62	96	57	72	201	207	e0.00
5	e0.00	e0.01	26	20	64	62	94	57	103	194	180	e0.00
6	e0.00	1.6	27	18	63	61	102	56	192	189	160	e0.00
7	e0.00	e0.15	30	18	e62	62	92	55	172	185	152	e0.00
8	e0.00	e0.33	36	17	e62	62	87	52	137	187	149	e0.00
9	e0.00	e0.60	38	25	e61	62	83	51	147	184	157	e0.00
10	e0.00	e0.99	40	38	e61	62	79	51	190	187	169	e0.00
11	e0.00	e1.6	37	39	e61	62	79	49	104	197	167	e0.00
12	e0.00	e2.3	36	39	e62	62	79	52	96	194	171	e0.00
13	e0.00	e3.4	34	39	e63	61	77	49	93	200	134	e0.00
14	e0.00	e4.7	38	46	65	60	75	47	88	196	120	e0.00
15	e0.00	e6.4	69	39	67	60	73	45	87	174	111	e0.00
16	e0.00	e8.5	73	41	67	60	70	44	90	175	108	e0.00
17	e0.00	e11	40	37	67	61	69	45	84	174	103	e0.00
18	e0.00	e14	40	38	66	61	68	44	88	177	63	e0.00
19	e0.00	e18	41	41	66	61	66	41	96	175	52	e0.00
20	e0.00	18	43	45	66	61	64	38	93	184	54	e0.00
21	e0.00	18	42	49	65	73	61	35	86	191	54	e0.00
22	e0.00	17	45	52	64	85	58	30	79	166	78	e0.00
23	e0.00	17	58	58	64	93	56	29	75	149	91	e0.00
24	e0.00	17	40	59	65	90	56	28	69	152	85	e0.00
25	e0.00	18	36	67	66	83	57	28	74	178	98	e0.00
26	e0.00	20	39	73	65	81	58	29	71	189	97	e0.00
27	e0.00	21	42	76	64	81	59	27	69	156	78	e0.00
28	e0.00	23	44	76	64	81	61	26	140	154	83	e0.00
29	e0.00	25	46	78	---	81	61	28	163	132	104	e0.00
30	e0.00	32	47	81	---	105	59	30	182	118	113	e0.00
31	e0.00	---	47	83	---	130	---	35	---	120	64	---
Total	0.00	299.58	1,214	1,456	1,852	2,212	2,275	1,326	3,075	5,416	3,743	12.60
Mean	0.00	9.99	39.2	47.0	66.1	71.4	75.8	42.8	102	175	121	0.42
Max	0.00	32	73	83	86	130	129	57	192	201	207	9.6
Min	0.00	0.00	18	17	61	60	56	26	34	118	52	0.00
Ac-ft	0.00	594	2,410	2,890	3,670	4,390	4,510	2,630	6,100	10,740	7,420	25

STATISTICS OF MONTHLY MEAN DATA FOR WATER YEARS 1950 - 2005, BY WATER YEAR (WY)

	Oct	Nov	Dec	Jan	Feb	Mar	Apr	May	Jun	Jul	Aug	Sep
Mean	111	143	139	146	224	276	243	282	323	351	283	143
Max	515	425	389	384	579	1,684	756	1,624	1,743	1,613	1,202	1,935
(WY)	(1966)	(1966)	(1966)	(1959)	(1966)	(1960)	(1958)	(1957)	(1962)	(1962)	(1962)	(1951)
Min	0.00	0.06	0.09	0.11	1.98	28.2	17.7	6.98	53.0	160	98.9	0.12
(WY)	(2005)	(2004)	(2004)	(2004)	(2004)	(2004)	(2004)	(2004)	(2004)	(1952)	(1952)	(2003)

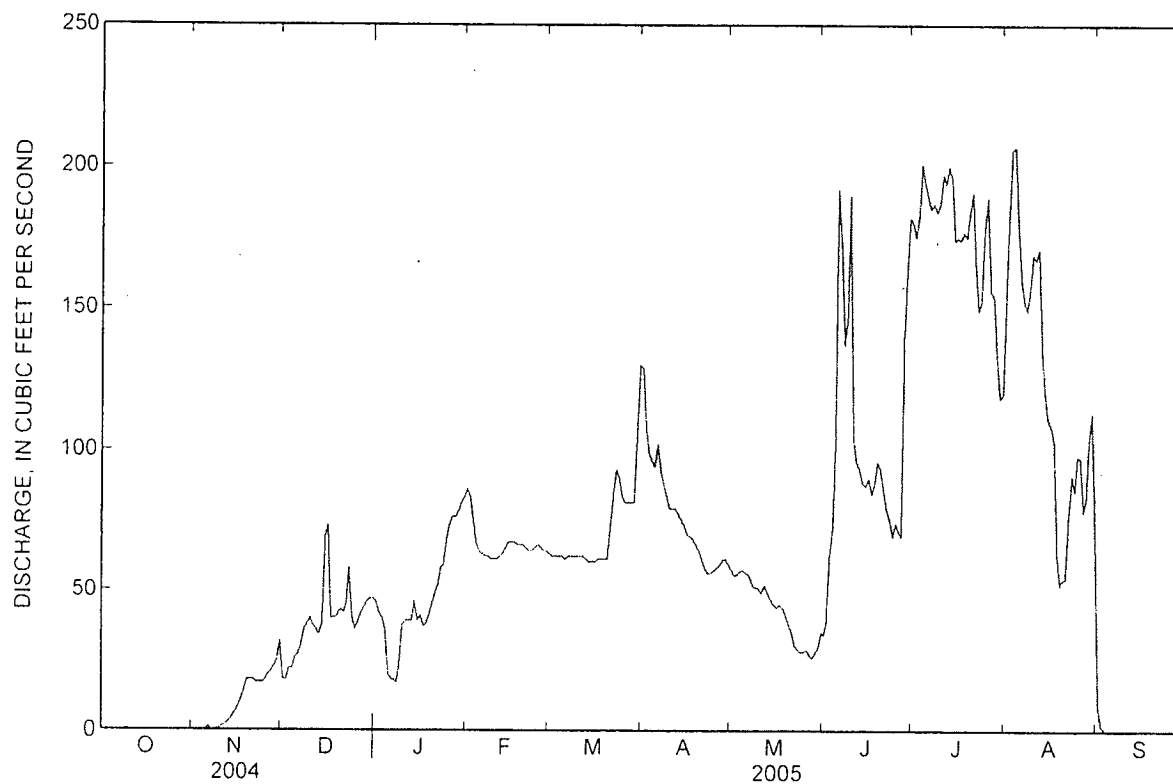
06843500 REPUBLICAN RIVER AT CAMBRIDGE, NE—Continued

SUMMARY STATISTICS

	Calendar Year 2004		Water Year 2005		Water Years 1950 – 2005a	
Annual total	16,517.34		22,881.18			
Annual mean	45.1		62.7		222	
Highest annual mean					686	1951
Lowest annual mean					41.0	2004
Highest daily mean	243	Jul 21	207	Aug 4	8,610	Mar 22, 1960
Lowest daily mean	0.00	Jun 8	0.00	Oct 1	0.00	Oct 13, 2002
Annual seven-day minimum	0.00	Oct 1	0.00	Oct 1	0.00	Oct 13, 2002
Maximum peak flow			330	Jun 9	11,000b	Sep 4, 1951
Maximum peak stage			4.53	Jun 9	9.35	Mar 22, 1960
Annual runoff (ac-ft)	32,760		45,380		160,900	
10 percent exceeds	185		161		397	
50 percent exceeds	14		58		157	
90 percent exceeds	0.00		0.00		58	

a Since beginning of storage in Harry Strunk Lake

b Stage 7.02 ft





Water-Data Report NE-2005

06844500 REPUBLICAN RIVER NEAR ORLEANS, NE

KANSAS RIVER BASIN

LOCATION.--Lat 40°07'54", long 99°30'09", in NE ¼ NE ¼ sec.19, T.2 N., R.19 W., Harlan County, Hydrologic Unit 10250009, on right bank 18 ft downstream from bridge on State Highway 89, 200 ft downstream from Burlington Northern Inc. bridge, 2 mi west of Orleans, 2.8 mi upstream from Sappa Creek, 23 mi upstream from Harlan County Dam, and at mile 262.

DRAINAGE AREA.--15,580 mi² of which 6,700 mi² probably is noncontributing.

WATER-DISCHARGE RECORDS

REVISED RECORDS.--WDR NE-94-1: Drainage area.

PERIOD OF RECORD.--October 1947 to current year.

GAGE.--Water-stage recorder. Datum of gage is 1,972.57 ft above sea level. Prior to June 2, 1948, non-recording gage at present site and datum. Data collection platform at station.

REMARKS.--Records good except for estimated daily discharges, which are poor. Natural flow affected by irrigation development above station and regulation by upstream reservoirs.

06844500 REPUBLICAN RIVER NEAR ORLEANS, NE—Continued

DISCHARGE, CUBIC FEET PER SECOND
WATER YEAR OCTOBER 2004 TO SEPTEMBER 2005
DAILY MEAN VALUES

[e, estimated]

Day	Oct	Nov	Dec	Jan	Feb	Mar	Apr	May	Jun	Jul	Aug	Sep
1	0.00	0.00	0.01	40	136	75	113	88	47	54	0.13	0.00
2	0.00	0.00	0.01	e36	134	76	124	86	57	42	0.21	0.00
3	0.00	0.00	0.01	e32	136	76	134	85	91	36	0.27	0.00
4	0.00	0.00	0.00	e29	146	77	126	85	205	40	0.24	0.00
5	0.00	0.00	0.00	e22	155	76	121	86	398	34	0.15	0.20
6	0.00	0.00	1.3	e18	157	77	120	87	340	30	0.04	0.02
7	0.00	0.00	2.5	e20	142	77	117	88	200	28	0.04	1.3
8	0.00	0.00	6.9	e20	127	76	119	89	170	26	0.02	35
9	0.00	0.00	11	e22	112	75	113	85	169	22	0.01	9.8
10	0.00	0.01	11	e26	117	75	111	81	164	19	0.05	2.7
11	0.00	0.00	13	e26	122	75	112	79	181	16	0.18	0.98
12	0.00	0.00	e12	e24	128	75	106	78	302	15	0.32	0.29
13	0.00	0.00	e12	e24	153	75	104	74	197	13	0.14	0.02
14	0.00	0.00	e12	e24	151	74	103	73	156	11	0.05	0.00
15	0.00	0.00	12	e22	100	73	103	68	137	9.4	0.00	0.00
16	0.00	0.00	14	e24	90	73	102	66	125	6.1	0.00	0.00
17	0.00	0.01	20	e26	86	74	101	64	119	4.1	13	0.00
18	0.00	0.03	26	e34	82	75	103	62	115	7.7	1.5	0.00
19	0.00	0.00	29	e40	82	74	103	57	110	4.2	0.46	0.00
20	0.00	0.00	26	e45	83	75	102	54	103	2.7	0.34	0.00
21	0.00	0.00	33	e50	82	96	100	50	107	1.7	0.22	0.00
22	0.00	0.00	24	e55	81	115	96	44	105	1.1	0.18	0.00
23	0.00	0.00	16	e60	79	124	91	40	104	0.61	0.11	0.00
24	0.00	0.00	e16	e65	79	118	90	38	87	0.40	1.6	0.00
25	0.00	0.00	e18	e70	78	116	91	43	76	0.40	2.0	0.00
26	0.00	0.01	19	e80	78	113	90	40	66	1.5	1.8	0.00
27	0.00	0.07	23	98	77	109	89	40	64	0.33	0.55	0.00
28	0.00	e0.40	27	110	76	106	90	38	62	0.18	0.28	0.00
29	0.00	e0.20	33	113	---	106	90	39	51	0.14	0.08	0.00
30	0.00	e0.10	38	117	---	105	90	40	51	0.09	0.00	0.00
31	0.00	---	39	127	---	104	---	46	---	0.09	0.00	---
Total	0.00	0.83	494.73	1,499	3,069	2,715	3,154	1,993	4,159	426.74	23.97	50.31
Mean	0.00	0.03	16.0	48.4	110	87.6	105	64.3	139	13.8	0.77	1.68
Max	0.00	0.40	39	127	157	124	134	89	398	54	13	35
Min	0.00	0.00	0.00	18	76	73	89	38	47	0.09	0.00	0.00
Ac-ft	0.00	1.6	981	2,970	6,090	5,390	6,260	3,950	8,250	846	48	100

STATISTICS OF MONTHLY MEAN DATA FOR WATER YEARS 1948 - 2005, BY WATER YEAR (WY)

	Oct	Nov	Dec	Jan	Feb	Mar	Apr	May	Jun	Jul	Aug	Sep
Mean	120	159	157	159	273	354	308	364	435	240	166	137
Max	840	519	438	392	772	1,720	915	1,528	2,732	1,602	1,396	2,026
(WY)	(1966)	(1966)	(1966)	(1953)	(1949)	(1960)	(1949)	(1951)	(1948)	(1962)	(1962)	(1951)
Min	0.00	0.00	0.00	1.09	12.8	32.4	35.6	17.5	1.84	1.19	0.00	0.00
(WY)	(1992)	(2003)	(2004)	(2004)	(2004)	(2004)	(2004)	(2004)	(2004)	(2002)	(2002)	(2002)

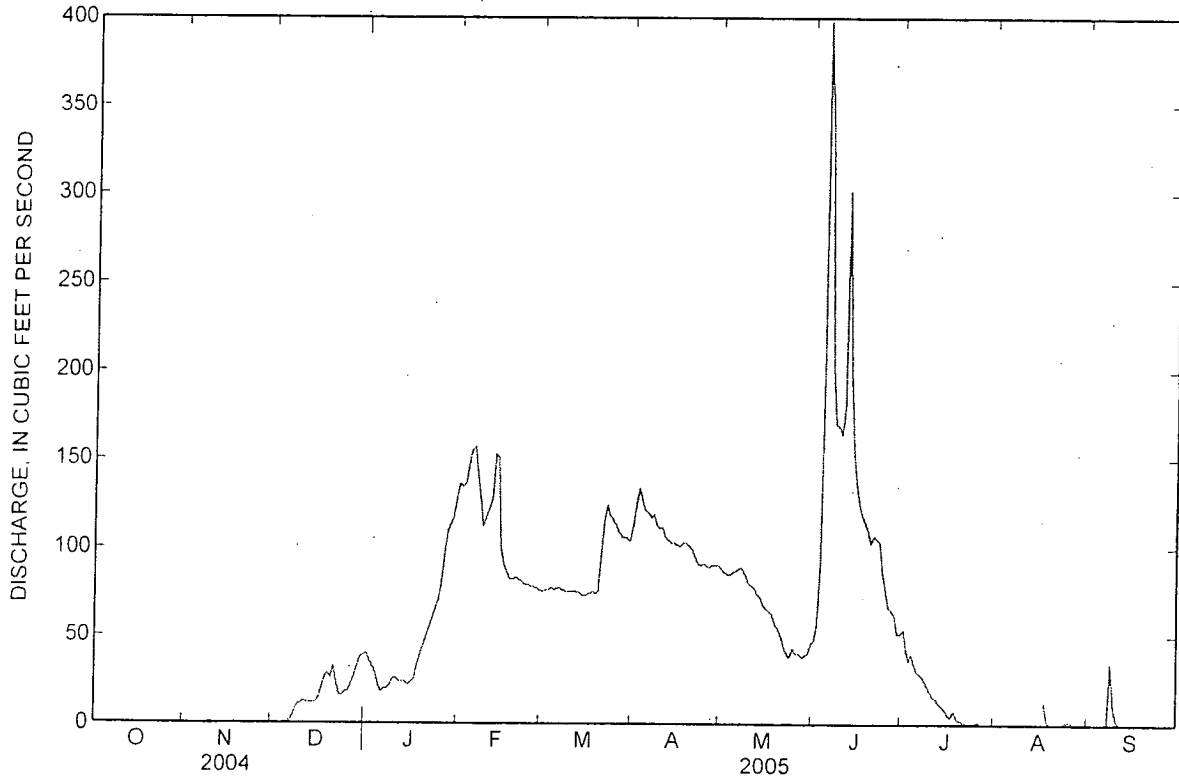
06844500 REPUBLICAN RIVER NEAR ORLEANS, NE—Continued

SUMMARY STATISTICS

	Calendar Year 2004		Water Year 2005		Water Years 1948 - 2005	
Annual total	3,950.16		17,585.58			
Annual mean	10.8		48.2		239	
Highest annual mean					746	1951
Lowest annual mean					9.44	2004
Highest daily mean	63 ¹	Jul 11	398	Jun 5	18,400	Jun 22, 1948
Lowest daily mean	0.00	Jan 1	0.00	Oct 1	0.00	Sep 15, 1952
Annual seven-day minimum	0.00	Jan 1	0.00	Oct 1	0.00	Sep 15, 1952
Maximum peak flow			526	Jun 5	40,600 ^a	Jun 22, 1948
Maximum peak stage			4.65	Jun 5	12.95 ^b	Mar 8, 1993
Annual runoff (ac-ft)	7,840		34,880		173,100	
10 percent exceeds	35		117		454	
50 percent exceeds	0.61		26		150	
90 percent exceeds	0.00		0.00		30	

a Stage 11.25 ft

b Backwater from ice





Water-Data Report NE-2005

06847500 SAPPA CREEK NEAR STAMFORD, NE

KANSAS RIVER BASIN

LOCATION.--Lat 40°07'54", long 99°33'17", in NW ¼ NW ¼ sec.23, T.2 N., R.20 W., Harlan County, Hydrologic Unit 10250011, on left bank 40 ft south of Burlington Northern Inc. track, 500 ft downstream from bridge on county highway, 2 mi east of Stamford, and 6.5 mi upstream from mouth.

DRAINAGE AREA.--3,840 mi² of which 470 mi² probably is noncontributing.

WATER-DISCHARGE RECORDS

REVISED RECORDS.--WSP 1919: 1960. WDR NE-71-1: Calendar year totals. WRD NE-82-1: 1979(M). WDR NE-94-1: Drainage area.

PERIOD OF RECORD.--October 1945 to current year. Monthly discharge only for some periods, published in WSP 1310.

GAGE.--Water-stage recorder. Datum of gage is 1,981.31 ft above sea level. Data collection platform at station.

REMARKS.--Records good except for July 10-12, which are poor. Natural flow affected by irrigation development above station.

06847500 SAPPA CREEK NEAR STAMFORD, NE—Continued

DISCHARGE, CUBIC FEET PER SECOND
WATER YEAR OCTOBER 2004 TO SEPTEMBER 2005
DAILY MEAN VALUES

Day	Oct	Nov	Dec	Jan	Feb	Mar	Apr	May	Jun	Jul	Aug	Sep
1	0.00	0.00	0.00	0.00	0.00	0.00	0.00	0.00	0.00	1.2	0.00	0.00
2	0.00	0.00	0.00	0.00	0.00	0.00	0.00	0.00	0.00	5.7	0.00	0.00
3	0.00	0.00	0.00	0.00	0.00	0.00	0.00	0.00	0.00	0.00	0.00	0.00
4	0.00	0.00	0.00	0.00	0.00	0.00	0.00	0.00	0.00	0.00	0.00	0.00
5	0.00	0.00	0.00	0.00	0.00	0.00	0.00	0.00	0.00	0.00	0.00	0.00
6	0.00	0.00	0.00	0.00	0.00	0.00	0.00	0.00	0.00	0.00	0.00	0.00
7	0.00	0.00	0.00	0.00	0.00	0.00	0.00	0.00	0.00	0.00	0.00	0.00
8	0.00	0.00	0.00	0.00	0.00	0.00	0.00	0.00	0.00	0.00	0.00	0.00
9	0.00	0.00	0.00	0.00	0.00	0.00	0.00	0.00	0.00	0.00	0.00	0.00
10	0.00	0.00	0.00	0.00	0.00	0.00	0.00	0.00	0.00	0.00	0.00	0.00
11	0.00	0.00	0.00	0.00	0.00	0.00	0.00	0.00	0.00	0.00	0.00	0.00
12	0.00	0.00	0.00	0.00	0.00	0.00	0.00	0.00	0.00	0.00	0.00	0.00
13	0.00	0.00	0.00	0.00	0.00	0.00	0.00	0.00	0.00	0.00	0.00	0.00
14	0.00	0.00	0.00	0.00	0.00	0.00	0.00	0.00	0.00	0.00	0.00	0.00
15	0.00	0.00	0.00	0.00	0.00	0.00	0.00	0.00	0.00	0.00	0.00	0.00
16	0.00	0.00	0.00	0.00	0.00	0.00	0.00	0.00	0.00	0.00	0.00	0.00
17	0.00	0.00	0.00	0.00	0.00	0.00	0.00	0.00	0.00	0.00	85	0.00
18	0.00	0.00	0.00	0.00	0.00	0.00	0.00	0.00	0.00	0.00	12	0.00
19	0.00	0.00	0.00	0.00	0.00	0.00	0.00	0.00	0.00	0.00	25	0.00
20	0.00	0.00	0.00	0.00	0.00	0.00	0.00	0.00	0.00	0.00	3.2	0.00
21	0.00	0.00	0.00	0.00	0.00	0.00	0.00	0.00	0.00	0.00	0.08	0.00
22	0.00	0.00	0.00	0.00	0.00	0.00	0.00	0.00	0.00	0.00	0.00	0.00
23	0.00	0.00	0.00	0.00	0.00	0.00	0.00	0.00	0.00	0.00	0.00	0.00
24	0.00	0.00	0.00	0.00	0.00	0.00	0.00	0.00	0.00	0.00	0.00	0.00
25	0.00	0.00	0.00	0.00	0.00	0.00	0.00	0.00	0.00	0.00	0.00	0.00
26	0.00	0.00	0.00	0.00	0.00	0.00	0.00	0.00	0.00	0.00	0.00	0.00
27	0.00	0.00	0.00	0.00	0.00	0.00	0.00	0.00	0.00	0.00	0.00	0.00
28	0.00	0.00	0.00	0.00	0.00	0.00	0.00	0.00	0.00	0.00	0.00	0.00
29	0.00	0.00	0.00	0.00	---	0.00	0.00	0.00	0.00	0.00	0.00	0.00
30	0.00	0.00	0.00	0.00	---	0.00	0.00	0.00	0.00	0.00	0.00	0.00
31	0.00	---	0.00	0.00	---	0.00	---	0.00	---	0.00	0.00	---
Total	0.00	0.00	0.00	0.00	0.00	0.00	0.00	0.00	0.00	6.90	125.28	0.00
Mean	0.00	0.00	0.00	0.00	0.00	0.00	0.00	0.00	0.00	0.22	4.04	0.00
Max	0.00	0.00	0.00	0.00	0.00	0.00	0.00	0.00	0.00	5.7	85	0.00
Min	0.00	0.00	0.00	0.00	0.00	0.00	0.00	0.00	0.00	0.00	0.00	0.00
Ac-ft	0.00	0.00	0.00	0.00	0.00	0.00	0.00	0.00	0.00	14	248	0.00

STATISTICS OF MONTHLY MEAN DATA FOR WATER YEARS 1946 - 2005, BY WATER YEAR (WY)

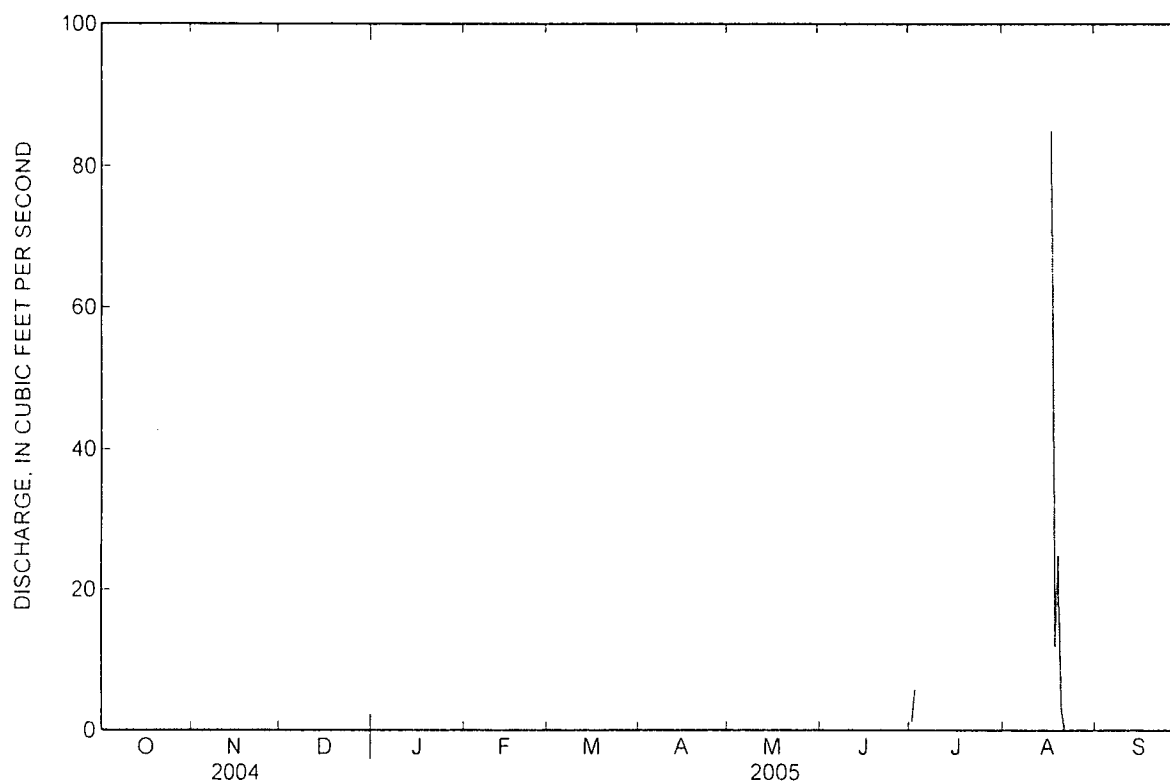
	Oct	Nov	Dec	Jan	Feb	Mar	Apr	May	Jun	Jul	Aug	Sep
Mean	36.6	12.1	10.1	8.73	17.9	32.7	23.3	52.8	136	82.5	53.1	37.5
Max	965	145	96.2	71.5	182	486	164	522	878	891	544	708
(WY)	(1947)	(1947)	(1966)	(1966)	(1966)	(1960)	(1960)	(1949)	(1947)	(1951)	(1950)	(1951)
Min	0.00	0.00	0.00	0.00	0.00	0.00	0.00	0.00	0.00	0.00	0.00	0.00
(WY)	(1954)	(1955)	(1955)	(1955)	(1956)	(1956)	(1956)	(1956)	(1981)	(1977)	(1955)	(1959)

06847500 SAPPA CREEK NEAR STAMFORD, NE—Continued

SUMMARY STATISTICS

	Calendar Year 2004		Water Year 2005		Water Years 1946 - 2005	
Annual total	42.41		132.18			
Annual mean	0.12		0.36		42.0	
Highest annual mean					229	1951
Lowest annual mean					0.12	2004
Highest daily mean	33	Jul 10	85	Aug 17	16,600	Jun 24, 1966
Lowest daily mean	0.00	Jan 1	0.00	Oct 1	0.00	Sep 12, 1953
Annual seven-day minimum	0.00	Jan 1	0.00	Oct 1	0.00	Sep 12, 1953
Maximum peak flow			329	Aug 17	43,400	Jun 24, 1966
Maximum peak stage			9.12	Aug 17	22.13a	Jun 24, 1966
Annual runoff (ac-ft)	84		262		30,460	
10 percent exceeds	0.00		0.00		75	
50 percent exceeds	0.00		0.00		5.3	
90 percent exceeds	0.00		0.00		0.00	

a From floodmark





Water Data Report NE-2005

06849500 REPUBLICAN RIVER BELOW HARLAN COUNTY DAM, NE

KANSAS RIVER BASIN

LOCATION.--Lat 40°04'42", long 99°10'07", in NW ¼ SE ¼ sec.6, T.1 N., R.16 W., Franklin County, Hydrologic Unit 10250016, on left bank 1.4 mi west of Naponee, 1.4 mi upstream from Turkey Creek, 2.8 mi downstream from Harlan County Dam, and at mile 234.

DRAINAGE AREA.--20,820 mi² of which 7,230 mi² probably is noncontributing.

WATER-DISCHARGE RECORDS

REVISED RECORDS.--WDR NE-94-1: Drainage area.

PERIOD OF RECORD.--December 1952 to current year.

GAGE.--Water-stage recorder. Datum of gage is 1,863.38 ft above sea level (Corps of Engineers benchmark). Data collection platform at station.

REMARKS.--Records good except for estimated daily discharges, which are poor. Flow completely regulated by Harlan County Lake (station 06849000) and partially regulated by six upstream reservoirs.

06849500 REPUBLICAN RIVER BELOW HARLAN COUNTY DAM, NE—Continued

DISCHARGE, CUBIC FEET PER SECOND
WATER YEAR OCTOBER 2004 TO SEPTEMBER 2005
DAILY MEAN VALUES

[e, estimated]

Day	Oct	Nov	Dec	Jan	Feb	Mar	Apr	May	Jun	Jul	Aug	Sep
1	0.00	0.00	0.00	0.00	0.23	0.78	0.91	1.8	3.6	1.1	0.07	0.09
2	0.00	0.00	0.00	0.00	0.19	0.91	0.74	1.7	51	1.5	0.04	0.07
3	0.00	0.00	0.00	0.00	0.13	1.2	0.74	1.9	53	1.1	0.01	0.06
4	0.00	0.00	0.00	0.00	0.10	1.4	0.76	2.1	15	1.1	0.00	0.05
5	0.00	0.00	0.00	0.00	0.08	1.4	1.1	1.9	6.6	0.96	0.00	0.04
6	0.00	0.00	0.00	0.00	0.19	1.2	204	1.8	3.6	0.85	0.00	0.12
7	0.00	0.00	0.00	0.00	0.18	0.77	9.7	1.7	2.7	0.79	0.00	0.04
8	0.00	0.00	0.00	0.00	0.09	0.66	4.9	1.5	2.4	0.67	0.00	0.03
9	0.00	0.00	e0.00	0.00	0.05	0.59	3.7	1.3	3.0	4.2	0.00	0.02
10	0.00	0.00	e0.00	0.00	0.03	0.57	3.6	1.4	10	4.9	0.00	0.01
11	0.00	0.00	e0.00	e0.00	0.02	0.53	4.0	1.6	8.5	1.8	0.00	0.00
12	0.00	0.00	e0.00	e0.00	0.05	0.51	4.7	2.1	6.6	1.0	0.02	0.00
13	0.00	0.00	e0.00	e0.00	0.94	0.33	3.0	2.1	4.9	0.76	0.05	0.00
14	0.00	0.00	e0.00	e0.00	1.7	0.34	2.6	1.9	3.2	0.63	0.07	0.00
15	0.00	0.00	e0.00	e0.00	1.3	0.36	2.5	1.9	2.7	0.47	0.05	0.00
16	0.00	0.00	0.00	e0.00	0.69	0.32	2.4	2.1	2.5	0.35	0.02	0.00
17	0.00	0.00	0.00	e0.00	0.45	0.29	2.3	2.3	2.6	0.19	112	0.00
18	0.00	0.00	0.00	e0.00	0.45	0.24	2.3	5.5	2.6	0.19	173	0.00
19	0.00	0.00	0.00	e0.00	0.60	0.26	2.3	3.0	2.6	0.12	8.7	0.00
20	0.00	0.00	0.00	e0.00	1.0	0.28	3.8	2.5	2.5	0.09	6.6	0.00
21	0.00	0.00	0.00	e0.00	0.83	3.4	2.9	2.1	3.0	0.06	5.8	0.00
22	0.00	0.00	0.00	0.46	0.69	4.3	2.1	1.8	2.9	0.05	2.4	0.00
23	0.00	0.00	0.00	0.41	0.80	3.1	1.9	2.0	2.7	0.03	1.0	0.00
24	0.00	0.00	0.00	0.71	0.62	2.3	1.9	1.9	2.4	0.02	0.45	0.00
25	0.00	0.00	0.00	1.1	0.57	1.5	2.3	1.9	2.3	0.01	0.32	0.00
26	0.00	0.00	0.00	1.0	0.60	1.2	2.2	1.8	2.0	0.83	0.45	0.00
27	0.00	0.00	0.00	0.90	0.51	1.1	2.1	1.8	2.0	0.38	0.27	0.00
28	0.00	0.00	0.00	0.80	0.47	0.97	2.3	2.0	2.2	0.91	0.20	0.00
29	0.00	0.00	0.00	0.71	---	0.84	2.3	2.5	2.6	0.45	0.17	0.00
30	0.00	0.00	0.00	0.70	---	1.4	2.3	2.7	1.6	0.18	0.13	0.00
31	0.00	---	0.00	0.61	---	1.1	---	3.7	---	0.11	0.10	---
Total	0.00	0.00	0.00	7.40	13.56	34.15	282.35	66.3	213.3	25.80	311.92	0.53
Mean	0.00	0.00	0.00	0.24	0.48	1.10	9.41	2.14	7.11	0.83	10.1	0.02
Max	0.00	0.00	0.00	1.1	1.7	4.3	204	5.5	53	4.9	173	0.12
Min	0.00	0.00	0.00	0.00	0.02	0.24	0.74	1.3	1.6	0.01	0.00	0.00
Ac-ft	0.00	0.00	0.00	15	27	68	560	132	423	51	619	1.1

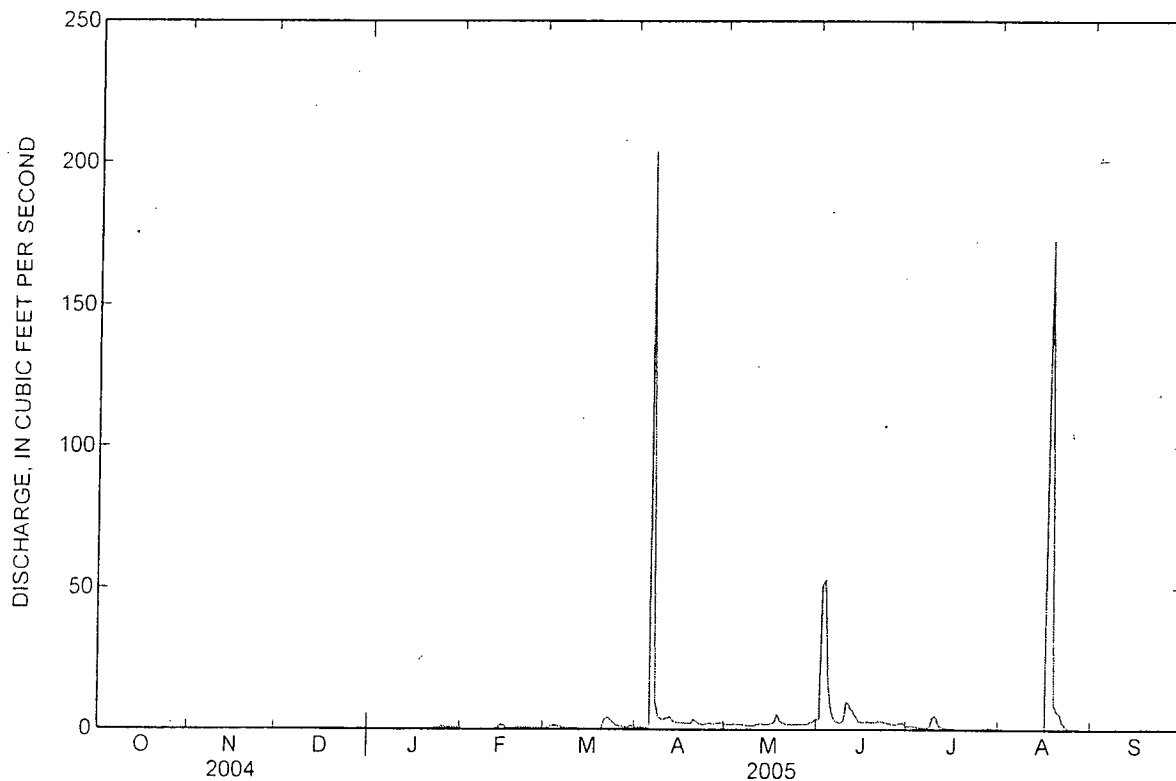
STATISTICS OF MONTHLY MEAN DATA FOR WATER YEARS 1953 - 2005, BY WATER YEAR (WY)

	Oct	Nov	Dec	Jan	Feb	Mar	Apr	May	Jun	Jul	Aug	Sep
Mean	112	68.3	55.5	49.9	106	118	185	188	354	682	405	120
Max	2,044	985	571	535	680	941	2,400	2,069	1,763	2,761	1,726	1,260
(WY)	(1966)	(1994)	(1994)	(1966)	(1966)	(1963)	(1960)	(1960)	(1962)	(1962)	(1962)	(1996)
Min	0.00	0.00	0.00	0.24	0.48	1.10	1.79	1.22	0.63	0.83	0.19	0.00
(WY)	(2005)	(2005)	(2005)	(2005)	(2005)	(2005)	(2004)	(2003)	(2004)	(2005)	(2004)	(2004)

06849500 REPUBLICAN RIVER BELOW HARLAN COUNTY DAM, NE—Continued

SUMMARY STATISTICS

	Calendar Year 2004	Water Year 2005	Water Years 1953 - 2005	
Annual total	367.51	955.31		
Annual mean	1.00	2.62	206	
Highest annual mean			690	1966
Lowest annual mean			1.42	2004
Highest daily mean	14 Jul 11	204 Apr 6	4,210	Nov 2, 1965
Lowest daily mean	0.00 Aug 22	0.00 Oct 1	0.00	Aug 22, 2004
Annual seven-day minimum	0.00 Aug 22	0.00 Oct 1	0.00	Aug 22, 2004
Maximum peak flow		541 Aug 17	4,320	Jun 25, 1957
Maximum peak stage		3.45 Aug 17	8.65	Jun 25, 1957
Annual runoff (ac-ft)	729	1,890	149,200	
10 percent exceeds	2.3	2.9	630	
50 percent exceeds	0.47	0.19	13	
90 percent exceeds	0.00	0.00	3.3	





Water Data Report NE-2005

06852500 COURTLAND CANAL AT NEBRASKA-KANSAS STATE LINE

KANSAS RIVER BASIN

LOCATION --Lat 40°00'15", long 98°07'55", in SW ¼ SE ¼ sec.32, T.1 N., R.7 W., Nuckolls County, Hydrologic Unit 10250016, on left bank 0.2 mi upstream from Nebraska-Kansas State line and 3.5 mi southwest of Superior, NE.

DRAINAGE AREA.--

WATER-DISCHARGE RECORDS

PERIOD OF RECORD.--October 1954 to current year.

GAGE.--Water-stage recorder and concrete Parshall flume. Datum of gage is 1,612.46 ft above sea level. Data collection platform at station.

REMARKS --Records good except for estimated daily discharges, which are poor. Canal diverts from Republican River at Courtland diversion dam in sec.7, T.1 N., R.9 W. Water is used for irrigation in Nebraska and Kansas; figures published herein represent that portion which flows into Kansas.

06852500 COURTLAND CANAL AT NEBRASKA-KANSAS STATE LINE—Continued

DISCHARGE, CUBIC FEET PER SECOND
WATER YEAR OCTOBER 2004 TO SEPTEMBER 2005
DAILY MEAN VALUES

[e, estimated]

Day	Oct	Nov	Dec	Jan	Feb	Mar	Apr	May	Jun	Jul	Aug	Sep
1	6.3	33	32	65	76	66	91	74	57	9.6	0.87	29
2	6.1	33	40	55	78	70	87	71	60	4.6	0.50	25
3	7.2	32	39	53	84	71	84	74	75	6.5	0.36	24
4	7.4	33	48	41	85	70	82	78	101	5.9	0.14	23
5	6.6	34	53	e26	93	69	80	79	188	4.8	0.05	24
6	7.4	36	44	e26	98	69	83	80	220	2.6	0.09	28
7	21	39	51	31	e68	66	91	81	124	1.7	e0.00	28
8	45	38	50	e35	34	64	189	80	79	1.6	e0.00	26
9	42	38	50	36	44	64	182	75	61	5.5	e0.00	23
10	36	39	49	31	66	65	127	74	65	4.2	e0.00	20
11	30	39	47	29	68	62	115	70	98	61	e0.00	18
12	28	40	50	31	88	62	123	85	130	11	e0.00	18
13	27	40	54	37	102	62	141	150	125	3.9	e0.00	18
14	25	40	33	e41	101	60	127	119	100	2.3	e0.00	17
15	25	26	37	e42	109	60	109	81	76	1.5	e0.00	17
16	27	39	47	e43	99	61	103	72	52	1.3	e0.15	16
17	29	42	52	e44	89	62	97	67	39	0.74	0.99	16
18	31	44	60	e44	82	62	93	64	143	0.62	4.8	17
19	31	56	47	e45	80	59	92	60	295	0.22	31	17
20	30	52	49	e46	81	60	89	57	178	0.14	72	17
21	31	49	57	e45	79	75	86	57	97	0.01	75	17
22	33	50	48	45	76	114	81	53	94	0.00	71	15
23	33	45	31	44	74	120	77	50	105	0.00	82	14
24	32	44	e30	49	72	119	76	50	34	0.00	217	16
25	31	43	31	50	e70	105	76	48	32	0.03	126	16
26	31	45	32	59	e70	95	75	49	19	22	73	16
27	33	45	37	65	e68	89	74	48	13	96	54	16
28	36	45	40	70	e68	91	76	46	7.8	82	44	15
29	37	45	44	71	---	87	77	51	18	35	38	15
30	33	39	56	69	---	85	75	52	16	16	33	16
31	32	---	58	71	---	88	---	53	---	7.3	34	---
Total	830.0	1,223	1,396	1,439	2,202	2,352	2,958	2,148	2,701.8	388.06	957.95	577
Mean	26.8	40.8	45.0	46.4	78.6	75.9	98.6	69.3	90.1	12.5	30.9	19.2
Max	45	56	60	71	109	120	189	150	295	96	217	29
Min	6.1	26	30	26	34	59	74	46	7.8	0.00	0.00	14
Ac-ft	1,650	2,430	2,770	2,850	4,370	4,670	5,870	4,260	5,360	770	1,900	1,140

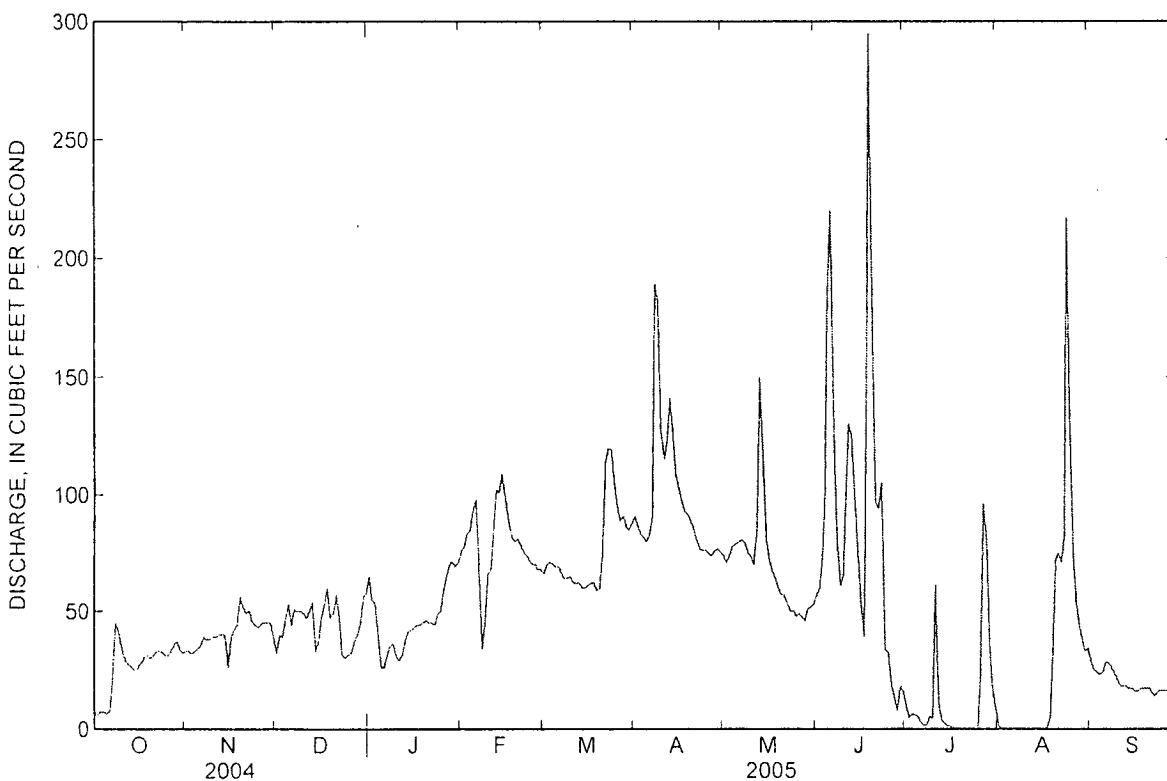
STATISTICS OF MONTHLY MEAN DATA FOR WATER YEARS 1955 - 2005, BY WATER YEAR (WY)

	Oct	Nov	Dec	Jan	Feb	Mar	Apr	May	Jun	Jul	Aug	Sep
Mean	30.7	13.4	7.17	7.71	6.79	11.1	18.1	53.3	112	334	266	63.5
Max	464	212	75.0	84.4	82.9	187	109	237	362	627	570	205
(WY)	(1958)	(1967)	(2001)	(1992)	(1992)	(2000)	(2000)	(1958)	(1988)	(1976)	(1976)	(1995)
Min	0.00	0.00	0.00	0.00	0.00	0.00	0.00	0.00	16.9	12.5	0.64	0.00
(WY)	(1955)	(1955)	(1955)	(1955)	(1955)	(1955)	(1955)	(1957)	(2004)	(2005)	(2004)	(1977)

06852500 COURTLAND CANAL AT NEBRASKA-KANSAS STATE LINE—Continued

SUMMARY STATISTICS

	Calendar Year 2004		Water Year 2005		Water Years 1955 - 2005	
Annual total	12,350.70		19,172.81			
Annual mean	33.7		52.5		77.9	
Highest annual mean					138	1976
Lowest annual mean					19.5	1955
Highest daily mean	99	Mar 28	295	Jun 19	731	Oct 22, 1957
Lowest daily mean	0.00	Feb 21	0.00	Jul 22	0.00	Oct 1, 1954
Annual seven-day minimum	0.00	Feb 21	0.00	Aug 7	0.00	Oct 1, 1954
Maximum peak flow			311	Jun 19	781	Sep 2, 1973
Maximum peak stage			2.89	Jun 19	5.05	Sep 2, 1973
Annual runoff (ac-ft)	24,500		38,030		56,410	
10 percent exceeds	72		96		280	
50 percent exceeds	36		47		0.00	
90 percent exceeds	0.00		4.8		0.00	





Water-Data Report NE-2005

06853020 REPUBLICAN RIVER AT GUIDE ROCK, NE

KANSAS RIVER BASIN

LOCATION.--Lat 40°03'51", long 98°19'51", in NE ¼ SE ¼ sec.9, T.1 N., R.9 W., Webster County, Hydrologic Unit 10250016, on left downstream bank at Nebraska State Highway 78 bridge, 0.2 mi downstream from Minnie Creek and 0.5 mi south of Guide Rock. Station is 3.1 river miles downstream from station 06853000, Republican River near Guide Rock, previous site, and at mile 176.

DRAINAGE AREA.--22,100 mi², of which 7,490 mi² probably is noncontributing.

WATER-DISCHARGE RECORDS

PERIOD OF RECORD.--August 1950 to current year. August 1950 to September 1984 published as Republican River near Guide Rock (06853000).

REVISED RECORDS.--WDR NE-97-1: Drainage area.

GAGE.--Water-stage recorder. Datum of gage is 1,616.15 ft above sea level, levels by U.S. Corps of Engineers. Prior to Oct. 1, 1959, at datum 12.98 ft higher, and Oct. 1, 1959 to Nov. 28, 1984, at datum 7.98 ft higher, both at site 3.1 miles upstream. Data collection platform at station

COOPERATION.--Records provided by Nebraska Department of Natural Resources and reviewed by the U.S. Geological Survey.

REMARKS.--Records good except for estimated daily discharges, which are poor. Natural flow affected by irrigation development above station, by regulation of upstream reservoirs, and since Nov. 14, 1952, by storage in Harlan County Lake (station 06849000).

EXTREMES FOR PERIOD OF RECORD.--Maximum: 29,200 CFS at gage height 20.73 feet (site and datum then in use) on June 16, 1957.

Discharge measurement at current site of 12,400 CFS at gage height 16.10 feet, gage datum on September 29, 1983.

06853020 REPUBLICAN RIVER AT GUIDE ROCK, NE—Continued

DISCHARGE, CUBIC FEET PER SECOND
 WATER YEAR OCTOBER 2004 TO SEPTEMBER 2005
 DAILY MEAN VALUES
 [e, estimated]

Day	Oct	Nov	Dec	Jan	Feb	Mar	Apr	May	Jun	Jul	Aug	Sep
1	1.0	1.4	e1.2	e2.0	2.9	2.8	3.7	2.6	1.8	0.29	0.20	0.19
2	0.92	1.4	e1.2	e1.7	2.9	2.7	3.7	2.5	2.5	0.34	0.18	0.19
3	0.87	1.3	e1.4	e1.6	2.9	2.8	3.8	2.6	4.0	0.36	0.15	0.19
4	0.70	1.3	e1.6	e1.6	3.0	2.7	3.7	2.7	2.9	0.29	0.16	0.35
5	0.71	1.3	e1.7	e1.5	e3.0	2.6	3.7	2.8	2.1	0.23	0.16	0.30
6	1.3	1.4	2.0	e1.6	e3.0	2.8	4.0	2.8	2.0	0.21	0.12	0.29
7	1.7	1.4	1.8	e1.6	e2.9	2.8	3.6	2.8	1.6	0.20	0.12	0.21
8	1.3	1.8	1.8	e1.7	e2.5	2.7	3.0	2.3	1.3	2.3	0.12	0.21
9	1.0	1.2	2.0	e1.8	e2.1	2.7	2.8	1.8	1.6	1.1	0.11	0.21
10	0.80	1.4	1.8	e1.8	e2.3	2.9	2.5	2.0	2.7	0.20	0.10	0.19
11	0.70	1.5	1.9	e1.8	e2.6	2.9	2.8	2.3	2.1	0.13	0.09	0.19
12	0.65	1.5	e1.9	e1.9	e2.8	3.0	3.3	4.6	1.7	0.11	0.12	0.19
13	0.61	1.5	e1.7	e1.9	e3.0	3.0	2.8	16	2.0	0.10	0.18	0.19
14	0.61	1.5	e1.6	e1.8	e3.2	3.0	2.7	7.7	1.6	0.14	0.11	0.21
15	0.61	1.6	e1.8	e1.7	e3.4	3.0	2.2	3.7	1.2	0.14	0.10	0.21
16	0.62	1.9	e1.9	e1.6	4.0	3.1	2.2	3.4	1.2	0.11	0.10	0.19
17	0.65	1.6	e1.8	e1.5	3.1	3.2	2.3	2.9	1.2	0.10	0.16	0.19
18	0.64	2.2	e1.9	e1.5	2.8	3.1	2.5	2.5	162	0.11	0.12	0.19
19	0.62	2.3	e1.7	e1.6	2.9	3.0	2.3	2.2	46	0.11	0.18	0.18
20	0.65	2.1	e1.8	e2.1	3.0	3.1	2.3	2.0	6.0	0.10	0.17	0.16
21	0.73	2.0	e1.8	e2.3	2.9	6.0	2.4	2.0	3.9	0.09	0.15	0.16
22	0.86	2.0	e1.5	e2.5	2.9	6.3	2.3	1.6	2.1	0.09	0.30	0.16
23	0.83	2.1	e1.4	e2.3	3.0	4.8	2.0	1.7	1.4	0.09	0.27	0.16
24	0.88	2.0	e1.2	e2.5	2.8	4.5	2.1	1.6	0.99	0.08	40	0.18
25	0.88	1.9	e1.3	e2.9	2.8	4.1	2.3	1.6	0.79	0.09	1.6	0.17
26	0.93	e1.8	e1.6	e3.0	2.7	4.0	2.3	1.5	0.96	39	0.85	0.17
27	1.0	e1.9	e1.6	e3.1	2.8	4.1	2.2	1.5	0.62	3.8	0.48	0.14
28	1.5	e1.9	e1.7	e3.1	2.8	4.0	2.8	1.9	0.56	0.74	0.35	0.15
29	1.2	e1.8	e1.8	e3.2	---	4.0	2.7	1.9	0.40	0.36	0.37	0.15
30	1.1	e1.5	e1.8	e3.0	---	4.1	2.6	1.7	0.37	0.27	0.26	0.16
31	1.4	---	e1.9	e2.8	---	3.8	---	2.2	---	0.22	0.23	---
Total	27.97	50.5	52.1	65.0	81.0	107.6	83.6	91.4	259.59	51.50	47.61	5.83
Mean	0.90	1.68	1.68	2.10	2.89	3.47	2.79	2.95	8.65	1.66	1.54	0.19
Max	1.7	2.3	2.0	3.2	4.0	6.3	4.0	16	162	39	40	0.35
Min	0.61	1.2	1.2	1.5	2.1	2.6	2.0	1.5	0.37	0.08	0.09	0.14
Ac-ft	55	100	103	129	161	213	166	181	515	102	94	12

STATISTICS OF MONTHLY MEAN DATA FOR WATER YEARS 1950 - 2005, BY WATER YEAR (WY)

	Oct	Nov	Dec	Jan	Feb	Mar	Apr	May	Jun	Jul	Aug	Sep
Mean	190	172	149	143	234	298	340	386	441	478	224	258
Max	2,073	1,245	819	588	948	1,077	2,484	2,511	3,619	4,298	1,712	3,602
(WY)	(1966)	(1994)	(1994)	(1952)	(1952)	(1952)	(1960)	(1960)	(1951)	(1951)	(1962)	(1951)
Min	0.90	1.68	1.68	1.81	2.89	3.47	2.79	2.95	6.69	1.66	0.47	0.19
(WY)	(2005)	(2005)	(2005)	(2004)	(2005)	(2005)	(2005)	(2005)	(2004)	(2005)	(2004)	(2005)

06853020 REPUBLICAN RIVER AT GUIDE ROCK, NE—Continued

SUMMARY STATISTICS

	Calendar Year 2004		Water Year 2005		Water Years 1950 - 2005	
Annual total	7,636.38		923.70			
Annual mean	20.9		2.53		275	
Highest annual mean					1,495	1951
Lowest annual mean					2.53	2005
Highest daily mean	724	May 19	162	Jun 18	20,900	Jun 16, 1957
Lowest daily mean	0.09	Aug 24	0.08	Jul 24	0.08	Jul 24, 2005
Annual seven-day minimum	0.09	Aug 23	0.09	Jul 19	0.09	Jul 19, 2005
Maximum peak flow			334	Jun 18	29,200	Jun 16, 1957
Maximum peak stage			6.68	Jun 18	20.73a	Jun 16, 1957
Annual runoff (ac-ft)	15,150		1,830		199,300	
10 percent exceeds	97		3.2		650	
50 percent exceeds	2.0		1.7		111	
90 percent exceeds	0.32		0.16		6.8	

a Site and datum then in use

